

**Anti-Fc gamma R1 Reference Antibody (Medarex Patent Anti-Fc-Gamma-R1)  
Recombinant Antibody  
Catalog # APR10908**

**Specification**

---

**Anti-Fc gamma R1 Reference Antibody (Medarex Patent Anti-Fc-Gamma-R1) - Product Information**

Application	FC, E, FTA
Primary Accession	<a href="#">P12314</a>
Reactivity	Human
Clonality	Monoclonal
Isotype	IgG1
Calculated MW	150 KDa

**Anti-Fc gamma R1 Reference Antibody (Medarex Patent Anti-Fc-Gamma-R1) - Additional Information**

**Target/Specificity**

Fc gamma R1

**Endotoxin**

< 0.001EU/ µg,determined by LAL method.

**Conjugation**

Unconjugated

**Expression system**

CHO Cell

**Format**

Purified monoclonal antibody supplied in PBS, pH6.0, without preservative.This antibody is purified through a protein A column.

**Anti-Fc gamma R1 Reference Antibody (Medarex Patent Anti-Fc-Gamma-R1) - Protein Information**

**Name** FCGR1A

**Synonyms** FCG1, FCGR1, IGFR1

**Function**

High affinity receptor for the Fc region of immunoglobulins gamma. Functions in both innate and adaptive immune responses. Mediates IgG effector functions on monocytes triggering antibody-dependent cellular cytotoxicity (ADCC) of virus-infected cells.

**Cellular Location**

Cell membrane; Single-pass type I membrane protein Note=Stabilized at the cell membrane through interaction with FCER1G

### Tissue Location

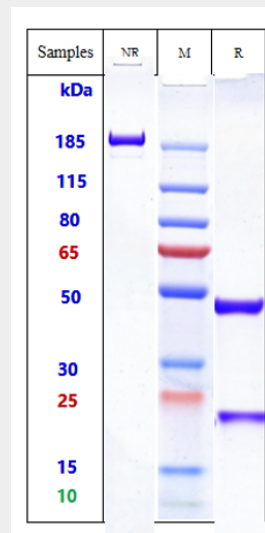
Monocyte/macrophage specific.

### Anti-Fc gamma R1 Reference Antibody (Medarex Patent Anti-Fc-Gamma-R1) - Protocols

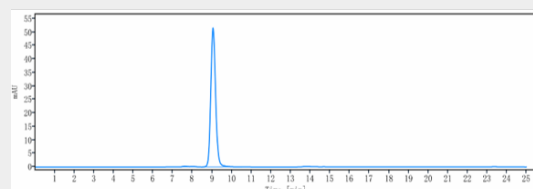
Provided below are standard protocols that you may find useful for product applications.

- [Western Blot](#)
- [Blocking Peptides](#)
- [Dot Blot](#)
- [Immunohistochemistry](#)
- [Immunofluorescence](#)
- [Immunoprecipitation](#)
- [Flow Cytometry](#)
- [Cell Culture](#)

### Anti-Fc gamma R1 Reference Antibody (Medarex Patent Anti-Fc-Gamma-R1) - Images



Anti-Fc gamma R1 Reference Antibody (Medarex Patent Anti-Fc-Gamma-R1) on SDS-PAGE under reducing (R) condition. The gel was stained with Coomassie Blue. The purity of the protein is greater than 90%



The purity of Anti-Fc gamma R1 Reference Antibody (Medarex Patent Anti-Fc-Gamma-R1) is more than 95% ,determined by SEC-HPLC.