

**Anti-DLL4 Reference Antibody (Smart Targeting patent anti-DLL4)
Recombinant Antibody
Catalog # APR10883**

Specification

Anti-DLL4 Reference Antibody (Smart Targeting patent anti-DLL4) - Product Information

Application	FC, E, FTA
Primary Accession	O9NR61
Reactivity	Human
Clonality	Monoclonal
Isotype	IgG1
Calculated MW	145 KDa

Anti-DLL4 Reference Antibody (Smart Targeting patent anti-DLL4) - Additional Information

Target/Specificity

DLL4

Endotoxin

< 0.001EU/ µg,determined by LAL method.

Conjugation

Unconjugated

Expression system

CHO Cell

Format

Purified monoclonal antibody supplied in PBS, pH6.0, without preservative.This antibody is purified through a protein A column.

Storage

-80°C for 2 years under sterile conditions □ -20°C for 1 year under sterile conditions □ Avoid repeated freeze-thaw cycles.

Anti-DLL4 Reference Antibody (Smart Targeting patent anti-DLL4) - Protein Information

Name DLL4

Function

Involved in the Notch signaling pathway as Notch ligand (PubMed:11134954). Activates NOTCH1 and NOTCH4. Involved in angiogenesis; negatively regulates endothelial cell proliferation and migration and angiogenic sprouting (PubMed:20616313). Essential for retinal progenitor proliferation. Required for suppressing rod fates in late retinal progenitors as well as for proper generation of other retinal cell types (By similarity). During spinal cord

neurogenesis, inhibits V2a interneuron fate (PubMed:17728344).

Cellular Location

Cell membrane; Single-pass type I membrane protein

Tissue Location

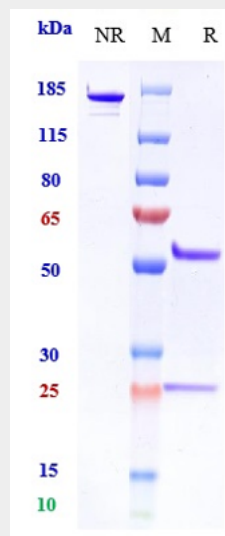
Expressed in vascular endothelium.

Anti-DLL4 Reference Antibody (Smart Targeting patent anti-DLL4) - Protocols

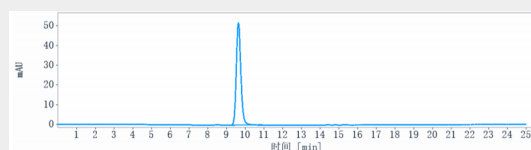
Provided below are standard protocols that you may find useful for product applications.

- [Western Blot](#)
- [Blocking Peptides](#)
- [Dot Blot](#)
- [Immunohistochemistry](#)
- [Immunofluorescence](#)
- [Immunoprecipitation](#)
- [Flow Cytometry](#)
- [Cell Culture](#)

Anti-DLL4 Reference Antibody (Smart Targeting patent anti-DLL4) - Images



Anti-DLL4 Reference Antibody (Smart Targeting patent anti-DLL4) on SDS-PAGE under reducing (R) condition. The gel was stained with Coomassie Blue. The purity of the protein is greater than 90%



The purity of Anti-DLL4 Reference Antibody (Smart Targeting patent anti-DLL4) is more than 95%, determined by SEC-HPLC.