

**Anti-CXCL8 / IL-8 Reference Antibody (Genentech patent anti-IL-8)  
Recombinant Antibody  
Catalog # APR10873****Specification****Anti-CXCL8 / IL-8 Reference Antibody (Genentech patent anti-IL-8) - Product Information**

Application	FC, E, FTA
Primary Accession	<a href="#">P10145</a>
Reactivity	Human
Clonality	Monoclonal
Isotype	IgG1
Calculated MW	145 KDa

**Anti-CXCL8 / IL-8 Reference Antibody (Genentech patent anti-IL-8) - Additional Information****Target/Specificity**

CXCL8 / IL-8

**Endotoxin**

&lt; 0.001EU/ µg,determined by LAL method.

**Conjugation**

Unconjugated

**Expression system**

CHO Cell

**Format**

Purified monoclonal antibody supplied in PBS, pH6.0, without preservative.This antibody is purified through a protein A column.

**Anti-CXCL8 / IL-8 Reference Antibody (Genentech patent anti-IL-8) - Protein Information****Name** CXCL8**Synonyms** IL8**Function**

Chemotactic factor that mediates inflammatory response by attracting neutrophils, basophils, and T-cells to clear pathogens and protect the host from infection (PubMed:<a href="http://www.uniprot.org/citations/18692776" target="\_blank">18692776</a>, PubMed:<a href="http://www.uniprot.org/citations/7636208" target="\_blank">7636208</a>). Also plays an important role in neutrophil activation (PubMed:<a href="http://www.uniprot.org/citations/2145175" target="\_blank">2145175</a>, PubMed:<a href="http://www.uniprot.org/citations/9623510" target="\_blank">9623510</a>). Released in response to an inflammatory stimulus, exerts its effect by binding to the G-protein-coupled receptors CXCR1 and CXCR2, primarily found in neutrophils, monocytes and endothelial cells

(PubMed:<a href="http://www.uniprot.org/citations/1840701" target="\_blank">1840701</a>, PubMed:<a href="http://www.uniprot.org/citations/1891716" target="\_blank">1891716</a>). G-protein heterotrimer (alpha, beta, gamma subunits) constitutively binds to CXCR1/CXCR2 receptor and activation by IL8 leads to beta and gamma subunits release from Galpha (GNAI2 in neutrophils) and activation of several downstream signaling pathways including PI3K and MAPK pathways (PubMed:<a href="http://www.uniprot.org/citations/11971003" target="\_blank">11971003</a>, PubMed:<a href="http://www.uniprot.org/citations/8662698" target="\_blank">8662698</a>).

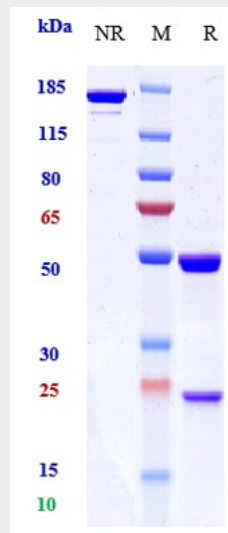
**Cellular Location**  
Secreted.

### Anti-CXCL8 / IL-8 Reference Antibody (Genentech patent anti-IL-8) - Protocols

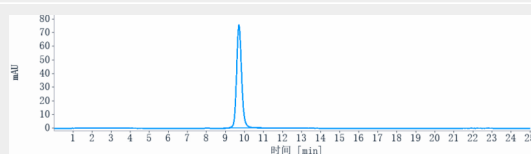
Provided below are standard protocols that you may find useful for product applications.

- [Western Blot](#)
- [Blocking Peptides](#)
- [Dot Blot](#)
- [Immunohistochemistry](#)
- [Immunofluorescence](#)
- [Immunoprecipitation](#)
- [Flow Cytometry](#)
- [Cell Culture](#)

### Anti-CXCL8 / IL-8 Reference Antibody (Genentech patent anti-IL-8) - Images



Anti-CXCL8 / IL-8 Reference Antibody (Genentech patent anti-IL-8) on SDS-PAGE under reducing (R) condition. The gel was stained with Coomassie Blue. The purity of the protein is greater than 90%



The purity of Anti-CXCL8 / IL-8 Reference Antibody (Genentech patent anti-IL-8) is more than 95%

,determined by SEC-HPLC.