

**Anti-CXC-ELR Reference Antibody (Lilly patent anti-Pan-ELR+)
Recombinant Antibody
Catalog # APR10870**

Specification

Anti-CXC-ELR Reference Antibody (Lilly patent anti-Pan-ELR+) - Product Information

Application	FC, E, FTA
Primary Accession	NA
Reactivity	Cynomolgus, Human, Mouse
Clonality	Monoclonal
Isotype	IgG4SP
Calculated MW	150 KDa

Anti-CXC-ELR Reference Antibody (Lilly patent anti-Pan-ELR+) - Additional Information

Target/Specificity
CXC-ELR

Endotoxin
< 0.001EU/ µg,determined by LAL method.

Conjugation
Unconjugated

Expression system
CHO Cell

Format
Purified monoclonal antibody supplied in PBS, pH6.0, without preservative.This antibody is purified through a protein A column.

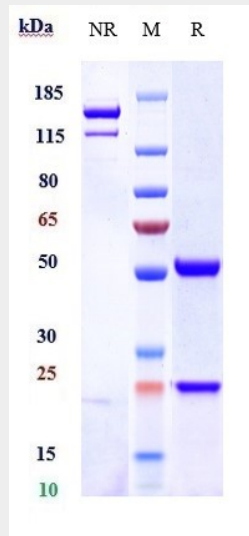
Anti-CXC-ELR Reference Antibody (Lilly patent anti-Pan-ELR+) - Protein Information

Anti-CXC-ELR Reference Antibody (Lilly patent anti-Pan-ELR+) - Protocols

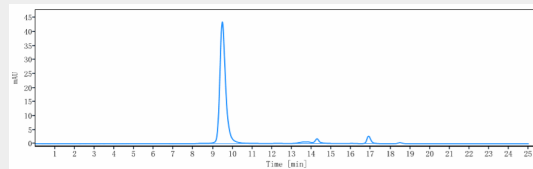
Provided below are standard protocols that you may find useful for product applications.

- [Western Blot](#)
- [Blocking Peptides](#)
- [Dot Blot](#)
- [Immunohistochemistry](#)
- [Immunofluorescence](#)
- [Immunoprecipitation](#)
- [Flow Cytometry](#)
- [Cell Culture](#)

Anti-CXC-ELR Reference Antibody (Lilly patent anti-Pan-ELR+) - Images



Anti-CXC-ELR Reference Antibody (Lilly patent anti-Pan-ELR+) on SDS-PAGE under reducing (R) condition. The gel was stained with Coomassie Blue. The purity of the protein is greater than 90%



The purity of Anti-CXC-ELR Reference Antibody (Lilly patent anti-Pan-ELR+) is more than 95% ,determined by SEC-HPLC.