

**Anti-CSF3 / G-CSF Reference Antibody (CSL324)**  
**Recombinant Antibody**  
**Catalog # APR10857**

**Specification**

---

**Anti-CSF3 / G-CSF Reference Antibody (CSL324) - Product Information**

Application	FC, E, FTA
Primary Accession	<a href="#">P09919</a>
Reactivity	Human
Clonality	Monoclonal
Isotype	IgG4SP
Calculated MW	143.86 KDa

**Anti-CSF3 / G-CSF Reference Antibody (CSL324) - Additional Information**

**Target/Specificity**  
CSF3 / G-CSF

**Endotoxin**  
< 0.001EU/ µg,determined by LAL method.

**Conjugation**  
Unconjugated

**Expression system**  
CHO Cell

**Format**  
Purified monoclonal antibody supplied in PBS, pH6.0, without preservative.This antibody is purified through a protein A column.

**Storage**  
-80°C for 2 years under sterile conditions □ -20°C for 1 year under sterile conditions □ Avoid repeated freeze-thaw cycles.

**Anti-CSF3 / G-CSF Reference Antibody (CSL324) - Protein Information**

**Name** CSF3

**Synonyms** C17orf33, GCSF

**Function**  
Granulocyte/macrophage colony-stimulating factors are cytokines that act in hematopoiesis by controlling the production, differentiation, and function of 2 related white cell populations of the blood, the granulocytes and the monocytes-macrophages. This CSF induces granulocytes.

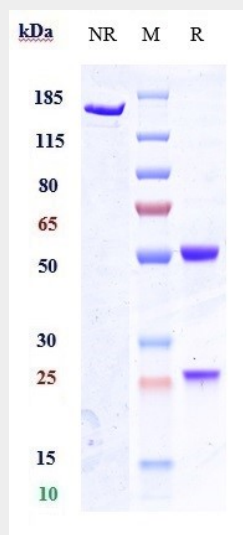
**Cellular Location**  
Secreted.

## Anti-CSF3 / G-CSF Reference Antibody (CSL324) - Protocols

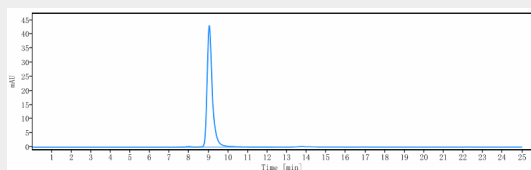
Provided below are standard protocols that you may find useful for product applications.

- [Western Blot](#)
- [Blocking Peptides](#)
- [Dot Blot](#)
- [Immunohistochemistry](#)
- [Immunofluorescence](#)
- [Immunoprecipitation](#)
- [Flow Cytometry](#)
- [Cell Culture](#)

## Anti-CSF3 / G-CSF Reference Antibody (CSL324) - Images



Anti-CSF3 / G-CSF Reference Antibody (CSL324) on SDS-PAGE under reducing (R) condition. The gel was stained with Coomassie Blue. The purity of the protein is greater than 95%



The purity of Anti-CSF3 / G-CSF Reference Antibody (CSL324) is more than 99.09% ,determined by SEC-HPLC.