

**Anti-CSF2 / GM-CSF Reference Antibody (Theraclone patent anti-GM-CSF)  
Recombinant Antibody  
Catalog # APR10856**

**Specification**

---

**Anti-CSF2 / GM-CSF Reference Antibody (Theraclone patent anti-GM-CSF) - Product Information**

Application	FC, E, FTA
Primary Accession	<a href="#">P04141</a>
Reactivity	Cynomolgus, Human, Rabbit
Clonality	Monoclonal
Isotype	IgG1
Calculated MW	145.02 KDa

**Anti-CSF2 / GM-CSF Reference Antibody (Theraclone patent anti-GM-CSF) - Additional Information**

**Target/Specificity**  
CSF2 / GM-CSF

**Endotoxin**  
< 0.001EU/ µg,determined by LAL method.

**Conjugation**  
Unconjugated

**Expression system**  
CHO Cell

**Format**  
Purified monoclonal antibody supplied in PBS, pH6.0, without preservative.This antibody is purified through a protein A column.

**Anti-CSF2 / GM-CSF Reference Antibody (Theraclone patent anti-GM-CSF) - Protein Information**

**Name** CSF2

**Synonyms** GMCSF

**Function**  
Cytokine that stimulates the growth and differentiation of hematopoietic precursor cells from various lineages, including granulocytes, macrophages, eosinophils and erythrocytes.

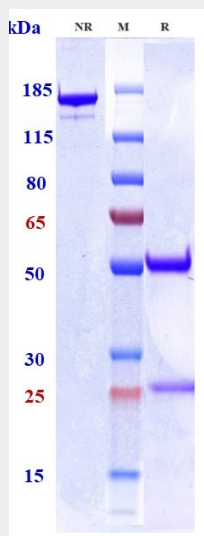
**Cellular Location**  
Secreted

## Anti-CSF2 / GM-CSF Reference Antibody (Theraclone patent anti-GM-CSF) - Protocols

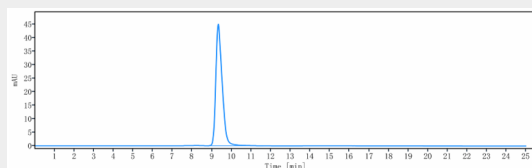
Provided below are standard protocols that you may find useful for product applications.

- [Western Blot](#)
- [Blocking Peptides](#)
- [Dot Blot](#)
- [Immunohistochemistry](#)
- [Immunofluorescence](#)
- [Immunoprecipitation](#)
- [Flow Cytometry](#)
- [Cell Culture](#)

## Anti-CSF2 / GM-CSF Reference Antibody (Theraclone patent anti-GM-CSF) - Images



Anti-CSF2 / GM-CSF Reference Antibody (Theraclone patent anti-GM-CSF) on SDS-PAGE under reducing (R) condition. The gel was stained with Coomassie Blue. The purity of the protein is greater than 95%



The purity of Anti-CSF2 / GM-CSF Reference Antibody (Theraclone patent anti-GM-CSF) is more than 95%, determined by SEC-HPLC.