

**Anti-Complement Factor P / Properdin Reference Antibody (Novelmed patent anti-Properdin)
Recombinant Antibody
Catalog # APR10847**

Specification

Anti-Complement Factor P / Properdin Reference Antibody (Novelmed patent anti-Properdin) - Product Information

Application	FC, E, FTA
Primary Accession	P27918
Reactivity	Human
Clonality	Monoclonal
Isotype	IgG1
Calculated MW	150 KDa

Anti-Complement Factor P / Properdin Reference Antibody (Novelmed patent anti-Properdin) - Additional Information

Target/Specificity

Complement Factor P / Properdin

Endotoxin

< 0.001EU/ µg,determined by LAL method.

Conjugation

Unconjugated

Expression system

CHO Cell

Format

Purified monoclonal antibody supplied in PBS, pH6.0, without preservative.This antibody is purified through a protein A column.

Anti-Complement Factor P / Properdin Reference Antibody (Novelmed patent anti-Properdin) - Protein Information

Name CFP

Synonyms PFC

Function

A positive regulator of the alternate pathway (AP) of complement (PubMed:20382442, PubMed:28264884). It binds to and stabilizes the C3- and C5-convertase enzyme complexes (PubMed:20382442, PubMed:28264884). Inhibits

CFI-CFH mediated degradation of Complement C3 beta chain (C3b) (PubMed:31507604).

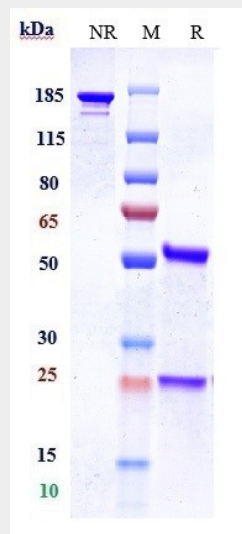
Cellular Location
Secreted

Anti-Complement Factor P / Properdin Reference Antibody (Novelmed patent anti-Properdin) - Protocols

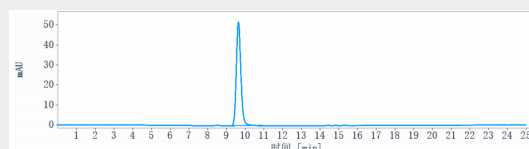
Provided below are standard protocols that you may find useful for product applications.

- [Western Blot](#)
- [Blocking Peptides](#)
- [Dot Blot](#)
- [Immunohistochemistry](#)
- [Immunofluorescence](#)
- [Immunoprecipitation](#)
- [Flow Cytometry](#)
- [Cell Culture](#)

Anti-Complement Factor P / Properdin Reference Antibody (Novelmed patent anti-Properdin) - Images



Anti-Complement Factor P / Properdin Reference Antibody (Novelmed patent anti-Properdin) on SDS-PAGE under reducing (R) condition. The gel was stained with Coomassie Blue. The purity of the protein is greater than 95%



The purity of Anti-Complement Factor P / Properdin Reference Antibody (Novelmed patent anti-Properdin) is more than 95% ,determined by SEC-HPLC.