

**Anti-Complement C5 Reference Antibody (lentalizumab)  
Recombinant Antibody  
Catalog # APR10841**

**Specification**

---

**Anti-Complement C5 Reference Antibody (lentalizumab) - Product Information**

Application	FC, E, FTA
Primary Accession	<a href="#">P01031</a>
Reactivity	Human
Clonality	Monoclonal
Isotype	IgG2SA
Calculated MW	145 KDa

**Anti-Complement C5 Reference Antibody (lentalizumab) - Additional Information**

**Target/Specificity**  
Complement C5

**Endotoxin**  
< 0.001EU/ µg,determined by LAL method.

**Conjugation**  
Unconjugated

**Expression system**  
CHO Cell

**Format**  
Purified monoclonal antibody supplied in PBS, pH6.0, without preservative.This antibody is purified through a protein A column.

**Anti-Complement C5 Reference Antibody (lentalizumab) - Protein Information**

**Name** C5

**Synonyms** CPAMD4

**Function**  
Activation of C5 by a C5 convertase initiates the spontaneous assembly of the late complement components, C5-C9, into the membrane attack complex. C5b has a transient binding site for C6. The C5b-C6 complex is the foundation upon which the lytic complex is assembled.

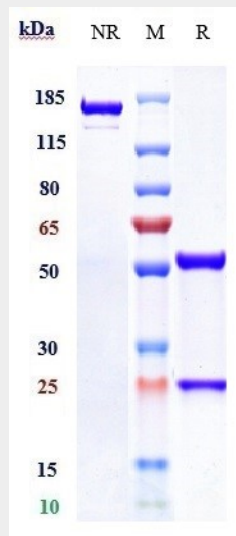
**Cellular Location**  
Secreted.

**Anti-Complement C5 Reference Antibody (lentalizumab) - Protocols**

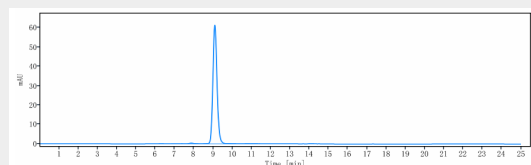
Provided below are standard protocols that you may find useful for product applications.

- [Western Blot](#)
- [Blocking Peptides](#)
- [Dot Blot](#)
- [Immunohistochemistry](#)
- [Immunofluorescence](#)
- [Immunoprecipitation](#)
- [Flow Cytometry](#)
- [Cell Culture](#)

### Anti-Complement C5 Reference Antibody (lentalizumab) - Images



Anti-Complement C5 Reference Antibody (lentalizumab) on SDS-PAGE under reducing (R) condition. The gel was stained with Coomassie Blue. The purity of the protein is greater than 90%



The purity of Anti-Complement C5 Reference Antibody (lentalizumab) is more than 95%, determined by SEC-HPLC.