

**Anti-Complement C5 Reference Antibody (crovalimab)
Recombinant Antibody
Catalog # APR10840**

Specification

Anti-Complement C5 Reference Antibody (crovalimab) - Product Information

Application	FC, E, FTA
Primary Accession	P01031
Reactivity	Human
Clonality	Monoclonal
Isotype	IgG1
Calculated MW	145 KDa

Anti-Complement C5 Reference Antibody (crovalimab) - Additional Information

Target/Specificity
Complement C5

Endotoxin
< 0.001EU/ µg,determined by LAL method.

Conjugation
Unconjugated

Expression system
CHO Cell

Format
Purified monoclonal antibody supplied in PBS, pH6.0, without preservative.This antibody is purified through a protein A column.

Anti-Complement C5 Reference Antibody (crovalimab) - Protein Information

Name C5

Synonyms CPAMD4

Function
Activation of C5 by a C5 convertase initiates the spontaneous assembly of the late complement components, C5-C9, into the membrane attack complex. C5b has a transient binding site for C6. The C5b-C6 complex is the foundation upon which the lytic complex is assembled.

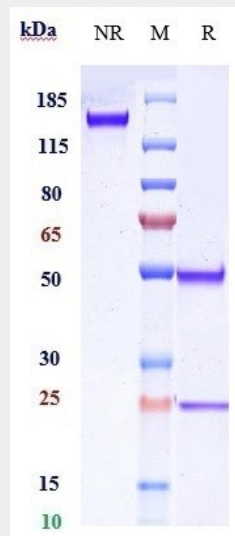
Cellular Location
Secreted.

Anti-Complement C5 Reference Antibody (crovalimab) - Protocols

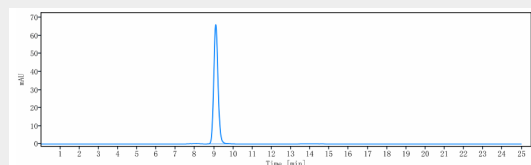
Provided below are standard protocols that you may find useful for product applications.

- [Western Blot](#)
- [Blocking Peptides](#)
- [Dot Blot](#)
- [Immunohistochemistry](#)
- [Immunofluorescence](#)
- [Immunoprecipitation](#)
- [Flow Cytometry](#)
- [Cell Culture](#)

Anti-Complement C5 Reference Antibody (crovalimab) - Images



Anti-Complement C5 Reference Antibody (crovalimab) on SDS-PAGE under reducing (R) condition. The gel was stained with Coomassie Blue. The purity of the protein is greater than 90%



The purity of Anti-Complement C5 Reference Antibody (crovalimab) is more than 95% ,determined by SEC-HPLC.