

Anti-Clusterin Reference Antibody (AB-16B5)
Recombinant Antibody
Catalog # APR10839

Specification

Anti-Clusterin Reference Antibody (AB-16B5) - Product Information

Application	FC, E, FTA
Primary Accession	O96AJ1
Reactivity	Human
Clonality	Monoclonal
Isotype	IgG2SA
Calculated MW	146.2 KDa

Anti-Clusterin Reference Antibody (AB-16B5) - Additional Information

Target/Specificity
Clusterin

Endotoxin
< 0.001EU/ µg,determined by LAL method.

Conjugation
Unconjugated

Expression system
CHO Cell

Format
Purified monoclonal antibody supplied in PBS, pH6.0, without preservative.This antibody is purified through a protein A column.

Storage
-80°C for 2 years under sterile conditions □ -20°C for 1 year under sterile conditions □ Avoid repeated freeze-thaw cycles.

Anti-Clusterin Reference Antibody (AB-16B5) - Protein Information

Name CLUAP1

Synonyms KIAA0643

Function
Required for cilia biogenesis. Appears to function within the multiple intraflagellar transport complex B (IFT-B). Key regulator of hedgehog signaling.

Cellular Location
Cell projection, cilium. Nucleus

Tissue Location

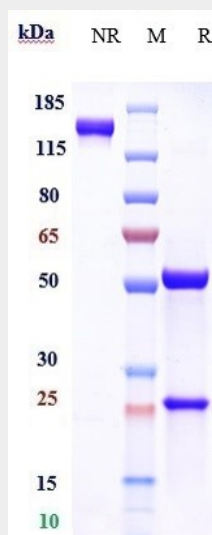
Expressed in testis, thyroid and trachea and to a lower extent in spinal cord and adrenal gland. Highly expressed in colon cancer and osteosarcoma cell lines.

Anti-Clusterin Reference Antibody (AB-16B5) - Protocols

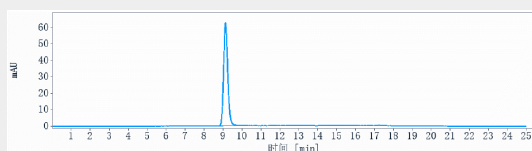
Provided below are standard protocols that you may find useful for product applications.

- [Western Blot](#)
- [Blocking Peptides](#)
- [Dot Blot](#)
- [Immunohistochemistry](#)
- [Immunofluorescence](#)
- [Immunoprecipitation](#)
- [Flow Cytometry](#)
- [Cell Culture](#)

Anti-Clusterin Reference Antibody (AB-16B5) - Images



Anti-Clusterin Reference Antibody (AB-16B5) on SDS-PAGE under reducing (R) condition. The gel was stained with Coomassie Blue. The purity of the protein is greater than 95%



The purity of Anti-Clusterin Reference Antibody (AB-16B5) is more than 95%, determined by SEC-HPLC.