

Anti-CLDN6 Reference Antibody (IM-302)
Recombinant Antibody
Catalog # APR10835

Specification

Anti-CLDN6 Reference Antibody (IM-302) - Product Information

Application	FC, E, FTA
Primary Accession	P56747
Reactivity	Human
Clonality	Monoclonal
Isotype	IgG
Calculated MW	150 KDa

Anti-CLDN6 Reference Antibody (IM-302) - Additional Information

Target/Specificity
CLDN6

Endotoxin
< 0.001EU/ µg,determined by LAL method.

Conjugation
Unconjugated

Expression system
CHO Cell

Format
Purified monoclonal antibody supplied in PBS, pH6.0, without preservative.This antibody is purified through a protein A column.

Anti-CLDN6 Reference Antibody (IM-302) - Protein Information

Name CLDN6

Function
Plays a major role in tight junction-specific obliteration of the intercellular space.

Cellular Location
Cell junction, tight junction {ECO:0000250|UniProtKB:Q9Z262}. Cell membrane; Multi-pass membrane protein

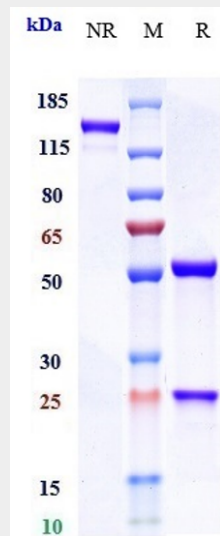
Tissue Location
Expressed in the liver, in peripheral blood mononuclear cells and hepatocarcinoma cell lines

Anti-CLDN6 Reference Antibody (IM-302) - Protocols

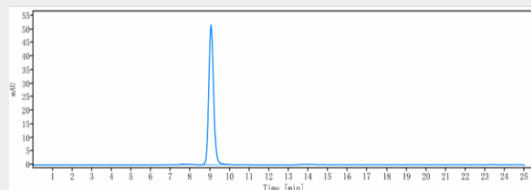
Provided below are standard protocols that you may find useful for product applications.

- [Western Blot](#)
- [Blocking Peptides](#)
- [Dot Blot](#)
- [Immunohistochemistry](#)
- [Immunofluorescence](#)
- [Immunoprecipitation](#)
- [Flow Cytometry](#)
- [Cell Culture](#)

Anti-CLDN6 Reference Antibody (IM-302) - Images



Anti-CLDN6 Reference Antibody (IM-302) on SDS-PAGE under reducing (R) condition. The gel was stained with Coomassie Blue. The purity of the protein is greater than 90%



The purity of Anti-CLDN6 Reference Antibody (IM-302) is more than 95% ,determined by SEC-HPLC.