

Anti-CLDN6 Reference Antibody (AB1-11)
Recombinant Antibody
Catalog # APR10832**Specification**

Anti-CLDN6 Reference Antibody (AB1-11) - Product Information

Application	FC, E, FTA
Primary Accession	P56747
Reactivity	Human
Clonality	Monoclonal
Isotype	IgG1
Calculated MW	78.42 KDa

Anti-CLDN6 Reference Antibody (AB1-11) - Additional Information**Target/Specificity**
CLDN6**Endotoxin**

< 0.001EU/ µg,determined by LAL method.

Conjugation

Unconjugated

Expression system

CHO Cell

Format

Purified monoclonal antibody supplied in PBS, pH6.0, without preservative.This antibody is purified through a protein A column.

Anti-CLDN6 Reference Antibody (AB1-11) - Protein Information**Name** CLDN6**Function**

Plays a major role in tight junction-specific obliteration of the intercellular space.

Cellular Location

Cell junction, tight junction {ECO:0000250|UniProtKB:Q9Z262}. Cell membrane; Multi-pass membrane protein

Tissue Location

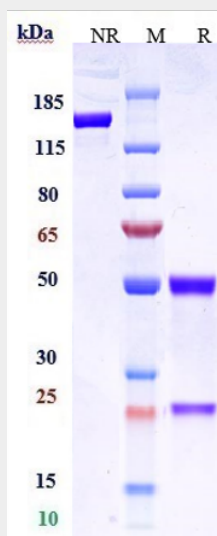
Expressed in the liver, in peripheral blood mononuclear cells and hepatocarcinoma cell lines

Anti-CLDN6 Reference Antibody (AB1-11) - Protocols

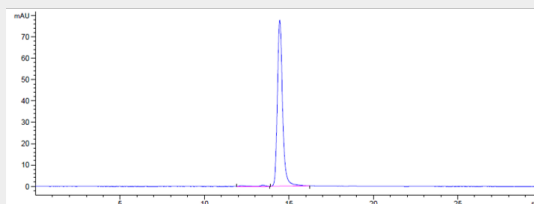
Provided below are standard protocols that you may find useful for product applications.

- [Western Blot](#)
- [Blocking Peptides](#)
- [Dot Blot](#)
- [Immunohistochemistry](#)
- [Immunofluorescence](#)
- [Immunoprecipitation](#)
- [Flow Cytometry](#)
- [Cell Culture](#)

Anti-CLDN6 Reference Antibody (AB1-11) - Images



Anti-CLDN6 Reference Antibody (AB1-11) on SDS-PAGE under reducing (R) condition. The gel was stained with Coomassie Blue. The purity of the protein is greater than 95%



The purity of Anti-CLDN6 Reference Antibody (AB1-11) is more than 98.29% ,determined by SEC-HPLC.