

**Anti-CEACAM5 / CEA / CD66e Reference Antibody (Immunomedics patent anti-CEACAM5 (Class III))
Recombinant Antibody
Catalog # APR10826**

Specification

Anti-CEACAM5 / CEA / CD66e Reference Antibody (Immunomedics patent anti-CEACAM5 (Class III)) - Product Information

Application	FC, E, FTA
Primary Accession	P06731
Reactivity	Human
Clonality	Monoclonal
Isotype	IgG1
Calculated MW	145 KDa

Anti-CEACAM5 / CEA / CD66e Reference Antibody (Immunomedics patent anti-CEACAM5 (Class III)) - Additional Information

Target/Specificity
CEACAM5 / CEA / CD66e

Endotoxin
< 0.001EU/ µg,determined by LAL method.

Conjugation
Unconjugated

Expression system
CHO Cell

Format
Purified monoclonal antibody supplied in PBS, pH6.0, without preservative.This antibody is purified through a protein A column.

Anti-CEACAM5 / CEA / CD66e Reference Antibody (Immunomedics patent anti-CEACAM5 (Class III)) - Protein Information

Name CEACAM5 ([HGNC:1817](#))

Function
Cell surface glycoprotein that plays a role in cell adhesion, intracellular signaling and tumor progression (PubMed:[10864933](http://www.uniprot.org/citations/10864933), PubMed:[10910050](http://www.uniprot.org/citations/10910050), PubMed:[2803308](http://www.uniprot.org/citations/2803308)). Mediates homophilic and heterophilic cell adhesion with other carcinoembryonic antigen-related cell adhesion molecules, such as CEACAM6 (PubMed:[2803308](http://www.uniprot.org/citations/2803308)). Plays a role as an oncogene by promoting tumor progression; induces resistance to anoikis of colorectal

carcinoma cells (PubMed:10910050).

Cellular Location

Cell membrane; Lipid-anchor, GPI-anchor. Apical cell membrane. Cell surface Note=Localized to the apical glycolyx surface

Tissue Location

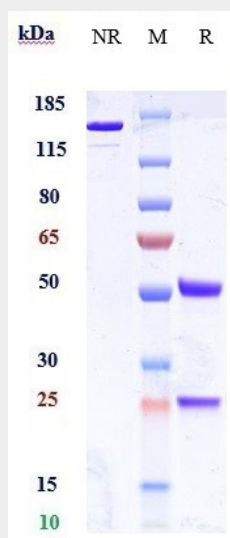
Expressed in columnar epithelial and goblet cells of the colon (at protein level) (PubMed:10436421). Found in adenocarcinomas of endodermally derived digestive system epithelium and fetal colon.

Anti-CEACAM5 / CEA / CD66e Reference Antibody (Immunomedics patent anti-CEACAM5 (Class III)) - Protocols

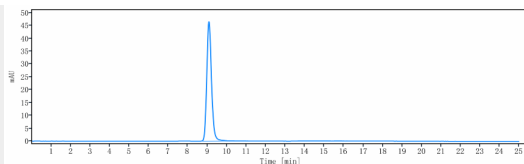
Provided below are standard protocols that you may find useful for product applications.

- [Western Blot](#)
- [Blocking Peptides](#)
- [Dot Blot](#)
- [Immunohistochemistry](#)
- [Immunofluorescence](#)
- [Immunoprecipitation](#)
- [Flow Cytometry](#)
- [Cell Culture](#)

Anti-CEACAM5 / CEA / CD66e Reference Antibody (Immunomedics patent anti-CEACAM5 (Class III)) - Images



Anti-CEACAM5 / CEA / CD66e Reference Antibody (Immunomedics patent anti-CEACAM5 (Class III)) on SDS-PAGE under reducing (R) condition. The gel was stained with Coomassie Blue. The purity of the protein is greater than 90%



The purity of Anti-CEACAM5 / CEA / CD66e Reference Antibody (Immunomedics patent anti-CEACAM5 (Class III)) is more than 95% ,determined by SEC-HPLC.