

**Anti-Cdiff Toxin A Reference Antibody (actoxumab)
Recombinant Antibody
Catalog # APR10824****Specification**

Anti-Cdiff Toxin A Reference Antibody (actoxumab) - Product Information

Application	FC, E, FTA
Primary Accession	NA
Reactivity	Human
Clonality	Monoclonal
Isotype	IgG1
Calculated MW	145 KDa

Anti-Cdiff Toxin A Reference Antibody (actoxumab) - Additional Information**Target/Specificity**

Cdiff Toxin A

Endotoxin

< 0.001EU/ µg, determined by LAL method.

Conjugation

Unconjugated

Expression system

CHO Cell

Format

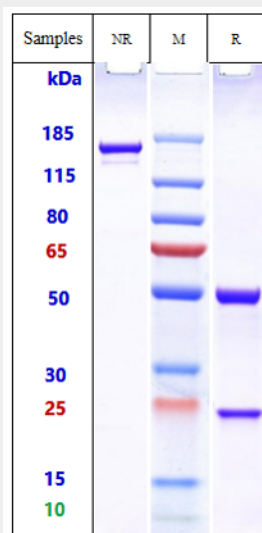
Purified monoclonal antibody supplied in PBS, pH6.0, without preservative. This antibody is purified through a protein A column.

Anti-Cdiff Toxin A Reference Antibody (actoxumab) - Protein Information**Anti-Cdiff Toxin A Reference Antibody (actoxumab) - Protocols**

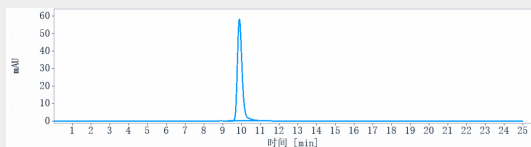
Provided below are standard protocols that you may find useful for product applications.

- [Western Blot](#)
- [Blocking Peptides](#)
- [Dot Blot](#)
- [Immunohistochemistry](#)
- [Immunofluorescence](#)
- [Immunoprecipitation](#)
- [Flow Cytometry](#)
- [Cell Culture](#)

Anti-Cdiff Toxin A Reference Antibody (actoxumab) - Images



Anti-Cdiff Toxin A Reference Antibody (actoxumab) on SDS-PAGE under reducing (R) condition. The gel was stained with Coomassie Blue. The purity of the protein is greater than 95%



The purity of Anti-Cdiff Toxin A Reference Antibody (actoxumab) is more than 95% ,determined by SEC-HPLC.