

**Anti-CDH17 / Cadherin-17 Reference Antibody (PTA001_A4)
Recombinant Antibody
Catalog # APR10823**

Specification

Anti-CDH17 / Cadherin-17 Reference Antibody (PTA001_A4) - Product Information

Application	FC, E, FTA
Primary Accession	O12864
Reactivity	Human
Clonality	Monoclonal
Isotype	IgG1
Calculated MW	149.12 KDa

Anti-CDH17 / Cadherin-17 Reference Antibody (PTA001_A4) - Additional Information

Target/Specificity
CDH17 / Cadherin-17

Endotoxin
< 0.001EU/ µg,determined by LAL method.

Conjugation
Unconjugated

Expression system
CHO Cell

Format
Purified monoclonal antibody supplied in PBS, pH6.0, without preservative.This antibody is purified through a protein A column.

Storage
-80°C for 2 years under sterile conditions □ -20°C for 1 year under sterile conditions □ Avoid repeated freeze-thaw cycles.

Anti-CDH17 / Cadherin-17 Reference Antibody (PTA001_A4) - Protein Information

Name CDH17

Function
Cadherins are calcium-dependent cell adhesion proteins. They preferentially interact with themselves in a homophilic manner in connecting cells; cadherins may thus contribute to the sorting of heterogeneous cell types. LI-cadherin may have a role in the morphological organization of liver and intestine. Involved in intestinal peptide transport.

Cellular Location
Cell membrane; Single-pass type I membrane protein

Tissue Location

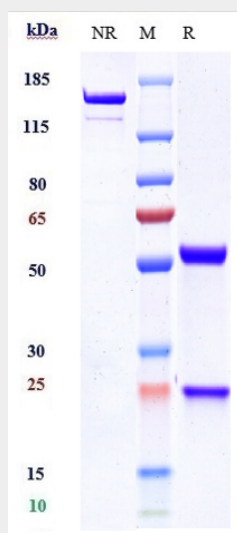
Expressed in the gastrointestinal tract and pancreatic duct. Not detected in kidney, lung, liver, brain, adrenal gland and skin.

Anti-CDH17 / Cadherin-17 Reference Antibody (PTA001_A4) - Protocols

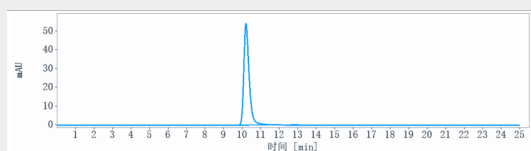
Provided below are standard protocols that you may find useful for product applications.

- [Western Blot](#)
- [Blocking Peptides](#)
- [Dot Blot](#)
- [Immunohistochemistry](#)
- [Immunofluorescence](#)
- [Immunoprecipitation](#)
- [Flow Cytometry](#)
- [Cell Culture](#)

Anti-CDH17 / Cadherin-17 Reference Antibody (PTA001_A4) - Images



Anti-CDH17 / Cadherin-17 Reference Antibody (PTA001_A4) on SDS-PAGE under reducing (R) condition. The gel was stained with Coomassie Blue. The purity of the protein is greater than 90%



The purity of Anti-CDH17 / Cadherin-17 Reference Antibody (PTA001_A4) is more than 95%, determined by SEC-HPLC.