

**Anti-CD48 Reference Antibody (Regeneron patent anti-CD48)
Recombinant Antibody
Catalog # APR10809****Specification**

Anti-CD48 Reference Antibody (Regeneron patent anti-CD48) - Product Information

Application	FC, E, FTA
Primary Accession	P09326
Reactivity	Human
Clonality	Monoclonal
Isotype	IgG4sp
Calculated MW	150 KDa

Anti-CD48 Reference Antibody (Regeneron patent anti-CD48) - Additional Information**Target/Specificity**
CD48**Endotoxin**

< 0.001EU/ µg, determined by LAL method.

Conjugation

Unconjugated

Expression system

CHO Cell

Format

Purified monoclonal antibody supplied in PBS, pH6.0, without preservative. This antibody is purified through a protein A column.

Anti-CD48 Reference Antibody (Regeneron patent anti-CD48) - Protein Information

Name CD48

Synonyms BCM1, BLAST1

Function

Glycosylphosphatidylinositol (GPI)-anchored cell surface glycoprotein that interacts via its N-terminal immunoglobulin domain with cell surface receptors including CD244/2B4 or CD2 to regulate immune cell function and activation (PubMed: [12007789](http://www.uniprot.org/citations/12007789), PubMed: [19494291](http://www.uniprot.org/citations/19494291), PubMed: [27249817](http://www.uniprot.org/citations/27249817), PubMed: [9841922](http://www.uniprot.org/citations/9841922)). Participates in T-cell signaling transduction by associating with CD2 and efficiently bringing the Src family protein kinase LCK and LAT to the TCR/CD3 complex (PubMed: [19494291](http://www.uniprot.org/citations/19494291)). In turn,

promotes LCK phosphorylation and subsequent activation (PubMed: [12007789](http://www.uniprot.org/citations/12007789)). Induces the phosphorylation of the cytoplasmic immunoreceptor tyrosine switch motifs (ITSMs) of CD244 initiating a series of signaling events that leads to the generation of the immunological synapse and the directed release of cytolytic granules containing perforin and granzymes by T-lymphocytes and NK- cells (PubMed: [27249817](http://www.uniprot.org/citations/27249817)).

Cellular Location

Cell membrane; Lipid-anchor, GPI-anchor. Membrane raft. Secreted

Tissue Location

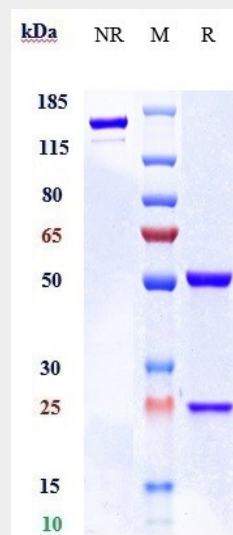
Widely expressed on all hematopoietic cells.

Anti-CD48 Reference Antibody (Regeneron patent anti-CD48) - Protocols

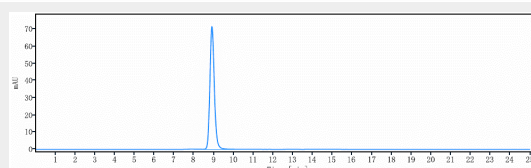
Provided below are standard protocols that you may find useful for product applications.

- [Western Blot](#)
- [Blocking Peptides](#)
- [Dot Blot](#)
- [Immunohistochemistry](#)
- [Immunofluorescence](#)
- [Immunoprecipitation](#)
- [Flow Cytometry](#)
- [Cell Culture](#)

Anti-CD48 Reference Antibody (Regeneron patent anti-CD48) - Images



Anti-CD48 Reference Antibody (Regeneron patent anti-CD48) on SDS-PAGE under reducing (R) condition. The gel was stained with Coomassie Blue. The purity of the protein is greater than 90%



The purity of Anti-CD48 Reference Antibody (Regeneron patent anti-CD48) is more than 95% ,determined by SEC-HPLC.