

**Anti-CanAg Reference Antibody (Cantuzumab mertansine)
Recombinant Antibody
Catalog # APR10796****Specification**

Anti-CanAg Reference Antibody (Cantuzumab mertansine) - Product Information

| | |
|-------------------|--------------------|
| Application | FC, E, FTA |
| Primary Accession | NA |
| Reactivity | Human |
| Clonality | Monoclonal |
| Isotype | IgG1 |
| Calculated MW | 145 KDa |

Anti-CanAg Reference Antibody (Cantuzumab mertansine) - Additional Information**Target/Specificity**

CanAg

Endotoxin

< 0.001EU/ µg,determined by LAL method.

Conjugation

DM1

Expression system

CHO Cell

Format

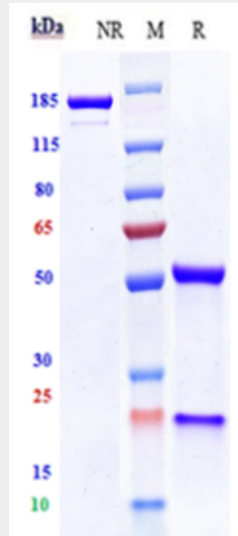
Purified monoclonal antibody supplied in PBS, pH6.0, without preservative.This antibody is purified through a protein A column.

Anti-CanAg Reference Antibody (Cantuzumab mertansine) - Protein Information**Anti-CanAg Reference Antibody (Cantuzumab mertansine) - Protocols**

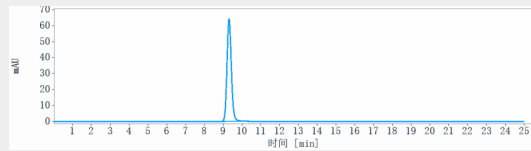
Provided below are standard protocols that you may find useful for product applications.

- [Western Blot](#)
- [Blocking Peptides](#)
- [Dot Blot](#)
- [Immunohistochemistry](#)
- [Immunofluorescence](#)
- [Immunoprecipitation](#)
- [Flow Cytometry](#)
- [Cell Culture](#)

Anti-CanAg Reference Antibody (Cantuzumab mertansine) - Images



Anti-CanAg Reference Antibody (Cantuzumab mertansine) on SDS-PAGE under reducing (R) condition. The gel was stained with Coomassie Blue. The purity of the protein is greater than 90%



The purity of Anti-CanAg Reference Antibody (Cantuzumab mertansine) is more than 95%, determined by SEC-HPLC.