

**Anti-BACE1 Reference Antibody (Genentech anti-BACE1)
Recombinant Antibody
Catalog # APR10791****Specification**

Anti-BACE1 Reference Antibody (Genentech anti-BACE1) - Product Information

Application	FC, E, FTA
Primary Accession	P56817
Reactivity	Cynomolgus, Human
Clonality	Monoclonal
Isotype	IgG1
Calculated MW	145 KDa

Anti-BACE1 Reference Antibody (Genentech anti-BACE1) - Additional Information**Target/Specificity**
BACE1**Endotoxin**
< 0.001EU/ µg,determined by LAL method.**Conjugation**
Unconjugated**Expression system**
CHO Cell**Format**
Purified monoclonal antibody supplied in PBS, pH6.0, without preservative.This antibody is purified through a protein A column.**Anti-BACE1 Reference Antibody (Genentech anti-BACE1) - Protein Information****Name** BACE1 ([HGNC:933](#))**Synonyms** BACE, KIAA1149**Function**
Responsible for the proteolytic processing of the amyloid precursor protein (APP). Cleaves at the N-terminus of the A-beta peptide sequence, between residues 671 and 672 of APP, leads to the generation and extracellular release of beta-cleaved soluble APP, and a corresponding cell-associated C-terminal fragment which is later released by gamma-secretase (PubMed:10656250, PubMed:10677483, PubMed:20354142). Cleaves CHL1 (By similarity).**Cellular Location**

Cell membrane; Single-pass type I membrane protein Golgi apparatus, trans-Golgi network. Endoplasmic reticulum. Endosome. Cell surface. Cytoplasmic vesicle membrane; Single-pass type I membrane protein. Membrane raft {ECO:0000250|UniProtKB:P56818}. Lysosome. Late endosome. Early endosome. Recycling endosome. Cell projection, axon {ECO:0000250|UniProtKB:P56818}. Cell projection, dendrite {ECO:0000250|UniProtKB:P56818}. Note=Predominantly localized to the later Golgi/trans-Golgi network (TGN) and minimally detectable in the early Golgi compartments. A small portion is also found in the endoplasmic reticulum, endosomes and on the cell surface (PubMed:11466313, PubMed:17425515). Colocalization with APP in early endosomes is due to addition of bisecting N-acetylglucosamine which blocks targeting to late endosomes and lysosomes (By similarity) Retrogradely transported from endosomal compartments to the trans-Golgi network in a phosphorylation- and GGA1- dependent manner (PubMed:15886016). {ECO:0000250|UniProtKB:P56818, ECO:0000269|PubMed:11466313, ECO:0000269|PubMed:15886016, ECO:0000269|PubMed:17425515}

Tissue Location

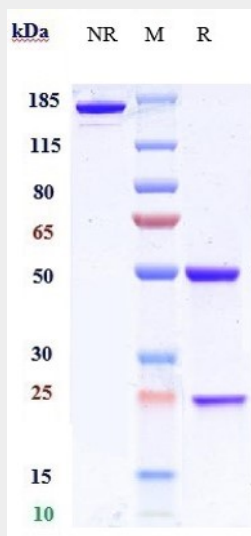
Expressed at high levels in the brain and pancreas. In the brain, expression is highest in the substantia nigra, locus coeruleus and medulla oblongata.

Anti-BACE1 Reference Antibody (Genentech anti-BACE1) - Protocols

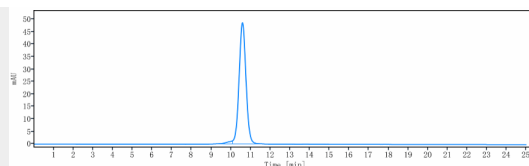
Provided below are standard protocols that you may find useful for product applications.

- [Western Blot](#)
- [Blocking Peptides](#)
- [Dot Blot](#)
- [Immunohistochemistry](#)
- [Immunofluorescence](#)
- [Immunoprecipitation](#)
- [Flow Cytometry](#)
- [Cell Culture](#)

Anti-BACE1 Reference Antibody (Genentech anti-BACE1) - Images



Anti-BACE1 Reference Antibody (Genentech anti-BACE1) on SDS-PAGE under reducing (R) condition. The gel was stained with Coomassie Blue. The purity of the protein is greater than 95%



The purity of Anti-BACE1 Reference Antibody (Genentech anti-BACE1) is more than 95% ,determined by SEC-HPLC.