

**Anti-AXL / UFO Reference Antibody (Tilvestamab-MMAE)
Recombinant Antibody
Catalog # APR10788****Specification**

Anti-AXL / UFO Reference Antibody (Tilvestamab-MMAE) - Product Information

Application	FC, E, FTA
Primary Accession	P30530
Reactivity	Cynomolgus, Human
Clonality	Monoclonal
Isotype	IgG1
Calculated MW	150 KDa

Anti-AXL / UFO Reference Antibody (Tilvestamab-MMAE) - Additional Information**Target/Specificity**

AXL / UFO

Endotoxin

< 0.001EU/ µg,determined by LAL method.

Conjugation

MMAE

Expression system

CHO Cell

Format

Purified monoclonal antibody supplied in PBS, pH6.0, without preservative.This antibody is purified through a protein A column.

Storage

-80°C for 2 years under sterile conditions □ -20°C for 1 year under sterile conditions □ Avoid repeated freeze-thaw cycles.

Anti-AXL / UFO Reference Antibody (Tilvestamab-MMAE) - Protein Information**Name** AXL**Synonyms** UFO**Function**

Receptor tyrosine kinase that transduces signals from the extracellular matrix into the cytoplasm by binding growth factor GAS6 and which is thus regulating many physiological processes including cell survival, cell proliferation, migration and differentiation. Ligand binding at the cell surface induces dimerization and autophosphorylation of AXL. Following activation by ligand, AXL binds and induces tyrosine phosphorylation of PI3-kinase subunits PIK3R1, PIK3R2 and PIK3R3; but also GRB2, PLCG1, LCK and PTPN11. Other downstream substrate candidates for AXL are CBL,

NCK2, SOCS1 and TNS2. Recruitment of GRB2 and phosphatidylinositol 3 kinase regulatory subunits by AXL leads to the downstream activation of the AKT kinase. GAS6/AXL signaling plays a role in various processes such as endothelial cell survival during acidification by preventing apoptosis, optimal cytokine signaling during human natural killer cell development, hepatic regeneration, gonadotropin-releasing hormone neuron survival and migration, platelet activation, or regulation of thrombotic responses. Also plays an important role in inhibition of Toll-like receptors (TLRs)-mediated innate immune response.

Cellular Location

Cell membrane; Single-pass type I membrane protein

Tissue Location

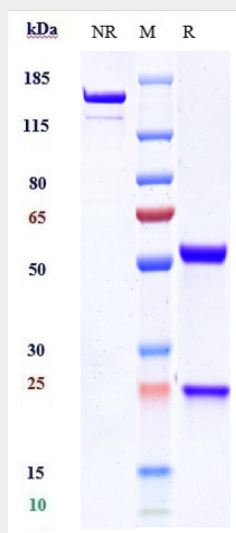
Highly expressed in metastatic colon tumors. Expressed in primary colon tumors. Weakly expressed in normal colon tissue.

Anti-AXL / UFO Reference Antibody (Tilvestamab-MMAE) - Protocols

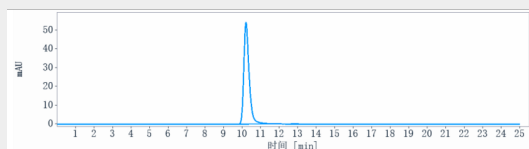
Provided below are standard protocols that you may find useful for product applications.

- [Western Blot](#)
- [Blocking Peptides](#)
- [Dot Blot](#)
- [Immunohistochemistry](#)
- [Immunofluorescence](#)
- [Immunoprecipitation](#)
- [Flow Cytometry](#)
- [Cell Culture](#)

Anti-AXL / UFO Reference Antibody (Tilvestamab-MMAE) - Images



Anti-AXL / UFO Reference Antibody (Tilvestamab-MMAE) on SDS-PAGE under reducing (R) condition. The gel was stained with Coomassie Blue. The purity of the protein is greater than 90%



The purity of Anti-AXL / UFO Reference Antibody (Tilvestamab-MMAE) is more than 95% ,determined by SEC-HPLC.