

**Anti-Albumin Reference Antibody (Numab patent anti-HSA)  
Recombinant Antibody  
Catalog # APR10768****Specification**

---

**Anti-Albumin Reference Antibody (Numab patent anti-HSA) - Product Information**

|                   |                          |
|-------------------|--------------------------|
| Application       | FC, E, FTA               |
| Primary Accession | <a href="#">P02768</a>   |
| Reactivity        | Cynomolgus, Human, Mouse |
| Clonality         | Monoclonal               |
| Isotype           | IgG1                     |
| Calculated MW     | 150 KDa                  |

**Anti-Albumin Reference Antibody (Numab patent anti-HSA) - Additional Information****Target/Specificity**

Albumin

**Endotoxin**

&lt; 0.001EU/ µg, determined by LAL method.

**Conjugation**

Unconjugated

**Expression system**

CHO Cell

**Format**

Purified monoclonal antibody supplied in PBS, pH6.0, without preservative. This antibody is purified through a protein A column.

**Anti-Albumin Reference Antibody (Numab patent anti-HSA) - Protein Information****Name** ALB**Function**

Binds water, Ca(2+), Na(+), K(+), fatty acids, hormones, bilirubin and drugs (Probable). Its main function is the regulation of the colloidal osmotic pressure of blood (Probable). Major zinc transporter in plasma, typically binds about 80% of all plasma zinc (PubMed:<a href="http://www.uniprot.org/citations/19021548" target="\_blank">19021548</a>). Major calcium and magnesium transporter in plasma, binds approximately 45% of circulating calcium and magnesium in plasma (By similarity). Potentially has more than two calcium-binding sites and might additionally bind calcium in a non-specific manner (By similarity). The shared binding site between zinc and calcium at residue Asp-273 suggests a crosstalk between zinc and calcium transport in the blood (By similarity). The rank order of affinity is zinc > calcium > magnesium (By similarity). Binds to the bacterial siderophore enterobactin and inhibits enterobactin-mediated iron uptake of E.coli from ferric transferrin, and may thereby limit the utilization of iron and growth of enteric bacteria such as E.coli (PubMed:<a href="http://www.uniprot.org/citations/6234017" target="\_blank">6234017</a>).

target="\_blank">6234017</a>). Does not prevent iron uptake by the bacterial siderophore aerobactin (PubMed:<a href="http://www.uniprot.org/citations/6234017" target="\_blank">6234017</a>).

**Cellular Location**  
Secreted.

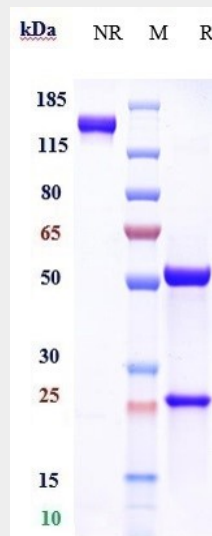
**Tissue Location**  
Plasma.

## Anti-Albumin Reference Antibody (Numab patent anti-HSA) - Protocols

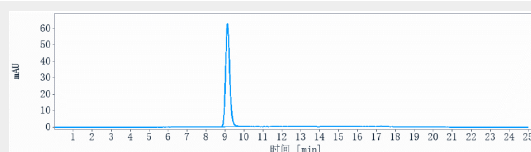
Provided below are standard protocols that you may find useful for product applications.

- [Western Blot](#)
- [Blocking Peptides](#)
- [Dot Blot](#)
- [Immunohistochemistry](#)
- [Immunofluorescence](#)
- [Immunoprecipitation](#)
- [Flow Cytometry](#)
- [Cell Culture](#)

## Anti-Albumin Reference Antibody (Numab patent anti-HSA) - Images



Anti-Albumin Reference Antibody (Numab patent anti-HSA) on SDS-PAGE under reducing (R) condition. The gel was stained with Coomassie Blue. The purity of the protein is greater than 90%



The purity of Anti-Albumin Reference Antibody (Numab patent anti-HSA) is more than 95%, determined by SEC-HPLC.