

**Anti-Abm Reference Antibody (IgG4+Kappa Isotype Control)
Recombinant Antibody
Catalog # APR10764**

Specification

Anti-Abm Reference Antibody (IgG4+Kappa Isotype Control) - Product Information

Application	FC, E, FTA
Primary Accession	NA
Reactivity	Chicken
Clonality	Monoclonal
Isotype	IgG4
Calculated MW	150 KDa

Anti-Abm Reference Antibody (IgG4+Kappa Isotype Control) - Additional Information

Target/Specificity

Abm

Endotoxin

< 0.001EU/ µg,determined by LAL method.

Conjugation

Unconjugated

Expression system

CHO Cell

Format

Purified monoclonal antibody supplied in PBS, pH6.0, without preservative.This antibody is purified through a protein A column.

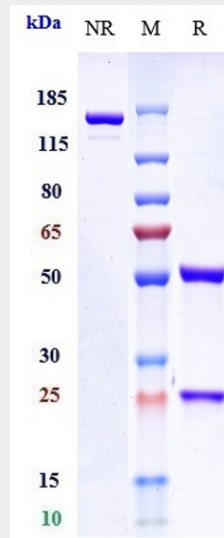
Anti-Abm Reference Antibody (IgG4+Kappa Isotype Control) - Protein Information

Anti-Abm Reference Antibody (IgG4+Kappa Isotype Control) - Protocols

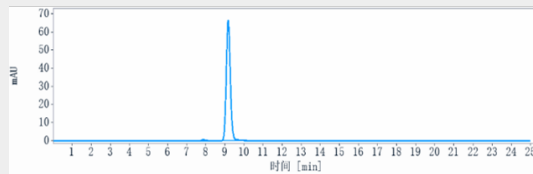
Provided below are standard protocols that you may find useful for product applications.

- [Western Blot](#)
- [Blocking Peptides](#)
- [Dot Blot](#)
- [Immunohistochemistry](#)
- [Immunofluorescence](#)
- [Immunoprecipitation](#)
- [Flow Cytometry](#)
- [Cell Culture](#)

Anti-Abm Reference Antibody (IgG4+Kappa Isotype Control) - Images



Anti-Abm Reference Antibody (IgG4+Kappa Isotype Control) on SDS-PAGE under reducing (R) condition. The gel was stained with Coomassie Blue. The purity of the protein is greater than 90%



The purity of Anti-Abm Reference Antibody (IgG4+Kappa Isotype Control) is more than 95% ,determined by SEC-HPLC.