

**Anti-Syndecan-1 / CD138 Reference Antibody (indatuximab)  
Recombinant Antibody  
Catalog # APR10759**

**Specification**

---

**Anti-Syndecan-1 / CD138 Reference Antibody (indatuximab) - Product Information**

Application	FC, E, FTA
Primary Accession	<a href="#">P18827</a>
Reactivity	Human
Clonality	Monoclonal
Isotype	IgG4SP
Calculated MW	146.1 KDa

**Anti-Syndecan-1 / CD138 Reference Antibody (indatuximab) - Additional Information**

**Target/Specificity**  
Syndecan-1 / CD138

**Endotoxin**  
< 0.001EU/ µg,determined by LAL method.

**Conjugation**  
Unconjugated

**Expression system**  
CHO Cell

**Format**  
Purified monoclonal antibody supplied in PBS, pH6.0, without preservative.This antibody is purified through a protein A column.

**Anti-Syndecan-1 / CD138 Reference Antibody (indatuximab) - Protein Information**

**Name** SDC1 ([HGNC:10658](#))

**Synonyms** SDC

**Function**  
Cell surface proteoglycan that contains both heparan sulfate and chondroitin sulfate and that links the cytoskeleton to the interstitial matrix (By similarity). Regulates exosome biogenesis in concert with SDCBP and PDCD6IP (PubMed:<a href="http://www.uniprot.org/citations/22660413" target="\_blank">22660413</a>). Able to induce its own expression in dental mesenchymal cells and also in the neighboring dental epithelial cells via an MSX1-mediated pathway (By similarity).

**Cellular Location**  
Membrane; Single-pass type I membrane protein. Secreted Secreted, extracellular exosome  
Note=Shedding of the ectodomain produces a soluble form

### Tissue Location

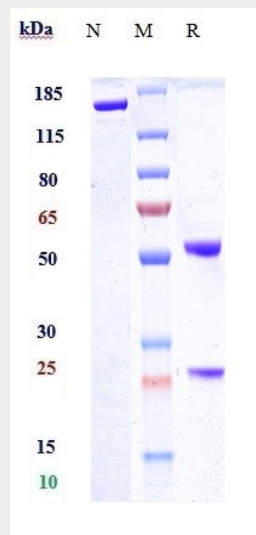
Detected in placenta (at protein level) (PubMed:32337544). Detected in fibroblasts (at protein level) (PubMed:36213313).

### Anti-Syndecan-1 / CD138 Reference Antibody (indatuximab) - Protocols

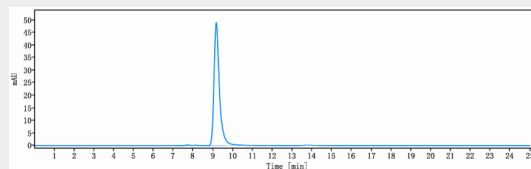
Provided below are standard protocols that you may find useful for product applications.

- [Western Blot](#)
- [Blocking Peptides](#)
- [Dot Blot](#)
- [Immunohistochemistry](#)
- [Immunofluorescence](#)
- [Immunoprecipitation](#)
- [Flow Cytometry](#)
- [Cell Culture](#)

### Anti-Syndecan-1 / CD138 Reference Antibody (indatuximab) - Images



Anti-Syndecan-1 / CD138 Reference Antibody (indatuximab) on SDS-PAGE under reducing (R) condition. The gel was stained with Coomassie Blue. The purity of the protein is greater than 95%



The purity of Anti-Syndecan-1 / CD138 Reference Antibody (indatuximab) is more than 99%, determined by SEC-HPLC.