

**Anti-SARS-CoV-2 Reference Antibody (Adintrevimab)  
Recombinant Antibody  
Catalog # APR10731****Specification**

---

**Anti-SARS-CoV-2 Reference Antibody (Adintrevimab) - Product Information**

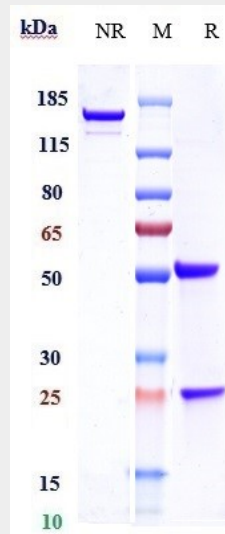
Application	FC, E, FTA
Primary Accession	<a href="#">NA</a>
Reactivity	Human
Clonality	Monoclonal
Isotype	IgG1
Calculated MW	145.04 KDa

**Anti-SARS-CoV-2 Reference Antibody (Adintrevimab) - Additional Information****Target/Specificity**  
SARS-CoV-2**Endotoxin**  
< 0.001EU/ µg, determined by LAL method.**Conjugation**  
Unconjugated**Expression system**  
CHO Cell**Format**  
Purified monoclonal antibody supplied in PBS, pH6.0, without preservative. This antibody is purified through a protein A column.**Anti-SARS-CoV-2 Reference Antibody (Adintrevimab) - Protein Information****Anti-SARS-CoV-2 Reference Antibody (Adintrevimab) - Protocols**

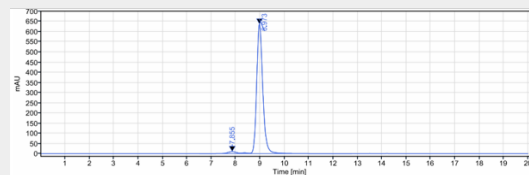
Provided below are standard protocols that you may find useful for product applications.

- [Western Blot](#)
- [Blocking Peptides](#)
- [Dot Blot](#)
- [Immunohistochemistry](#)
- [Immunofluorescence](#)
- [Immunoprecipitation](#)
- [Flow Cytometry](#)
- [Cell Culture](#)

**Anti-SARS-CoV-2 Reference Antibody (Adintrevimab) - Images**



Anti-SARS-CoV-2 Reference Antibody (Adintrevimab) on SDS-PAGE under reducing (R) condition. The gel was stained with Coomassie Blue. The purity of the protein is greater than 95%



The purity of Anti-SARS-CoV-2 Reference Antibody (Adintrevimab) is more than 96.94%, determined by SEC-HPLC.