

Anti-DKK1 Reference Antibody (BHQ-880)
Recombinant Antibody
Catalog # APR10701**Specification**

Anti-DKK1 Reference Antibody (BHQ-880) - Product Information

Application	FC, E, FTA
Primary Accession	O94907
Reactivity	Cynomolgus, Human, Mouse
Clonality	Monoclonal
Isotype	IgG1
Calculated MW	142.96 KDa

Anti-DKK1 Reference Antibody (BHQ-880) - Additional Information**Target/Specificity**
DKK1**Endotoxin**
< 0.001EU/ µg,determined by LAL method.**Conjugation**
Unconjugated**Expression system**
CHO Cell**Format**
Purified monoclonal antibody supplied in PBS, pH6.0, without preservative.This antibody is purified through a protein A column.**Anti-DKK1 Reference Antibody (BHQ-880) - Protein Information****Name** DKK1**Function**
Antagonizes canonical Wnt signaling by inhibiting LRP5/6 interaction with Wnt and by forming a ternary complex with the transmembrane protein KREMEN that promotes internalization of LRP5/6 (PubMed:22000856). DKKs play an important role in vertebrate development, where they locally inhibit Wnt regulated processes such as antero-posterior axial patterning, limb development, somitogenesis and eye formation. In the adult, Dkks are implicated in bone formation and bone disease, cancer and Alzheimer disease (PubMed:17143291). Inhibits the pro-apoptotic function of KREMEN1 in a Wnt-independent manner, and has anti-apoptotic activity (By similarity).**Cellular Location**
Secreted.

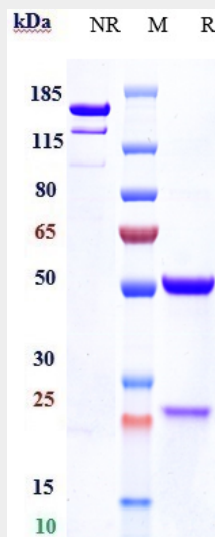
Tissue Location
Placenta.

Anti-DKK1 Reference Antibody (BHQ-880) - Protocols

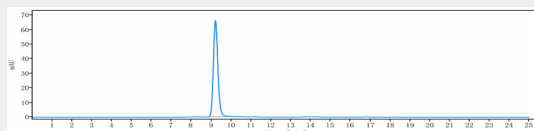
Provided below are standard protocols that you may find useful for product applications.

- [Western Blot](#)
- [Blocking Peptides](#)
- [Dot Blot](#)
- [Immunohistochemistry](#)
- [Immunofluorescence](#)
- [Immunoprecipitation](#)
- [Flow Cytometry](#)
- [Cell Culture](#)

Anti-DKK1 Reference Antibody (BHQ-880) - Images



Anti-DKK1 Reference Antibody (BHQ-880) on SDS-PAGE under reducing (R) condition. The gel was stained with Coomassie Blue. The purity of the protein is greater than 95%



The purity of Anti-DKK1 Reference Antibody (BHQ-880) is more than 100% ,determined by SEC-HPLC.