

**Anti-HGF / SF Reference Antibody (ficlatuzumab)
Recombinant Antibody
Catalog # APR10693****Specification**

Anti-HGF / SF Reference Antibody (ficlatuzumab) - Product Information

Application	FC, E, FTA
Primary Accession	P14210
Reactivity	Cynomolgus, Human
Clonality	Monoclonal
Isotype	IgG1
Calculated MW	150 KDa

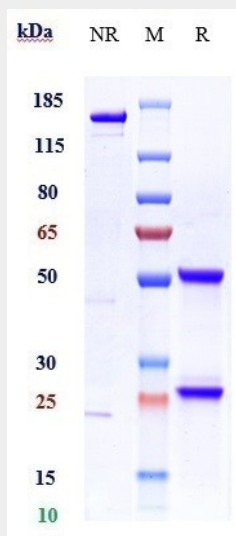
Anti-HGF / SF Reference Antibody (ficlatuzumab) - Additional Information**Target/Specificity**
HGF / SF**Endotoxin**
< 0.001EU/ µg,determined by LAL method.**Conjugation**
Unconjugated**Expression system**
CHO Cell**Format**
Purified monoclonal antibody supplied in PBS, pH6.0, without preservative.This antibody is purified through a protein A column.**Anti-HGF / SF Reference Antibody (ficlatuzumab) - Protein Information****Name** HGF**Synonyms** HPTA**Function**
Potent mitogen for mature parenchymal hepatocyte cells, seems to be a hepatotropic factor, and acts as a growth factor for a broad spectrum of tissues and cell types (PubMed:20624990). Activating ligand for the receptor tyrosine kinase MET by binding to it and promoting its dimerization (PubMed:15167892, PubMed:20977675). Activates MAPK signaling following Tmprss13 cleavage and activation (PubMed:20977675).

Anti-HGF / SF Reference Antibody (ficlatuzumab) - Protocols

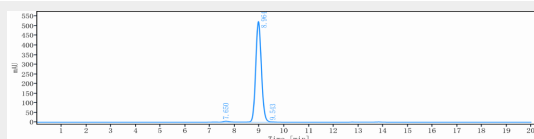
Provided below are standard protocols that you may find useful for product applications.

- [Western Blot](#)
- [Blocking Peptides](#)
- [Dot Blot](#)
- [Immunohistochemistry](#)
- [Immunofluorescence](#)
- [Immunoprecipitation](#)
- [Flow Cytometry](#)
- [Cell Culture](#)

Anti-HGF / SF Reference Antibody (ficlatuzumab) - Images



Anti-HGF / SF Reference Antibody (ficlatuzumab) on SDS-PAGE under reducing (R) condition. The gel was stained with Coomassie Blue. The purity of the protein is greater than 95%



The purity of Anti-HGF / SF Reference Antibody (ficlatuzumab) is more than 98.01% ,determined by SEC-HPLC.