

**Anti-Mesothelin Reference Antibody (anetumab ravtansine)
Recombinant Antibody
Catalog # APR10681**

Specification

Anti-Mesothelin Reference Antibody (anetumab ravtansine) - Product Information

Application	FC, E, FTA
Primary Accession	O13421
Reactivity	Cynomolgus, Human
Clonality	Monoclonal
Isotype	IgG1
Calculated MW	143.8 KDa

Anti-Mesothelin Reference Antibody (anetumab ravtansine) - Additional Information

Target/Specificity
Mesothelin

Endotoxin
< 0.001EU/ µg,determined by LAL method.

Conjugation
DM4

Expression system
CHO Cell

Format
Purified monoclonal antibody supplied in PBS, pH6.0, without preservative.This antibody is purified through a protein A column.

Anti-Mesothelin Reference Antibody (anetumab ravtansine) - Protein Information

Name MSLN

Synonyms MPF

Function
Membrane-anchored forms may play a role in cellular adhesion.

Cellular Location
Cell membrane; Lipid-anchor, GPI-anchor. Golgi apparatus [Isoform 3]: Secreted.

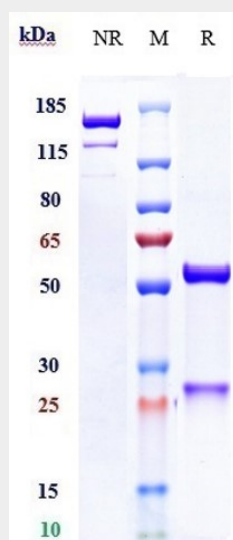
Tissue Location
Expressed in lung. Expressed at low levels in heart, placenta and kidney. Expressed in mesothelial cells. Highly expressed in mesotheliomas, ovarian cancers, and some squamous cell carcinomas (at protein level).

Anti-Mesothelin Reference Antibody (anetumab ravtansine) - Protocols

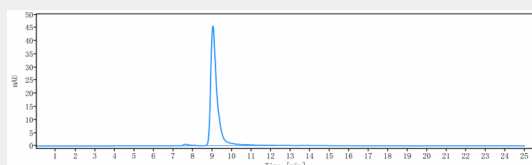
Provided below are standard protocols that you may find useful for product applications.

- [Western Blot](#)
- [Blocking Peptides](#)
- [Dot Blot](#)
- [Immunohistochemistry](#)
- [Immunofluorescence](#)
- [Immunoprecipitation](#)
- [Flow Cytometry](#)
- [Cell Culture](#)

Anti-Mesothelin Reference Antibody (anetumab ravtansine) - Images



Anti-Mesothelin Reference Antibody (anetumab ravtansine) on SDS-PAGE under reducing (R) condition. The gel was stained with Coomassie Blue. The purity of the protein is greater than 95%



The purity of Anti-Mesothelin Reference Antibody (anetumab ravtansine) is more than 98.58%, determined by SEC-HPLC.