

**Anti-MIF Reference Antibody (imalumab)
Recombinant Antibody
Catalog # APR10680****Specification**

Anti-MIF Reference Antibody (imalumab) - Product Information

Application	FC, E, FTA
Primary Accession	P14174
Reactivity	Human
Clonality	Monoclonal
Isotype	IgG1
Calculated MW	144.52 KDa

Anti-MIF Reference Antibody (imalumab) - Additional Information**Target/Specificity**

MIF

Endotoxin

< 0.001EU/ µg,determined by LAL method.

Conjugation

Unconjugated

Expression system

CHO Cell

Format

Purified monoclonal antibody supplied in PBS, pH6.0, without preservative.This antibody is purified through a protein A column.

Anti-MIF Reference Antibody (imalumab) - Protein Information**Name** MIF {ECO:0000303|PubMed:2552447, ECO:0000312|HGNC:HGNC:7097}**Function**

Pro-inflammatory cytokine involved in the innate immune response to bacterial pathogens (PubMed:15908412, PubMed:17443469, PubMed:23776208). The expression of MIF at sites of inflammation suggests a role as mediator in regulating the function of macrophages in host defense (PubMed:15908412, PubMed:17443469, PubMed:23776208). Counteracts the anti-inflammatory activity of glucocorticoids (PubMed:15908412, PubMed:17443469, PubMed:23776208).

href="http://www.uniprot.org/citations/23776208" target="_blank">23776208). Has phenylpyruvate tautomerase and dopachrome tautomerase activity (in vitro), but the physiological substrate is not known (PubMed:11439086, PubMed:17526494). It is not clear whether the tautomerase activity has any physiological relevance, and whether it is important for cytokine activity (PubMed:11439086, PubMed:17526494).

Cellular Location

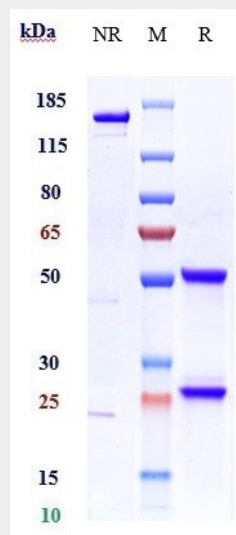
Secreted. Cytoplasm. Note=Does not have a cleavable signal sequence and is secreted via a specialized, non-classical pathway Secreted by macrophages upon stimulation by bacterial lipopolysaccharide (LPS), or by M.tuberculosis antigens

Anti-MIF Reference Antibody (imalumab) - Protocols

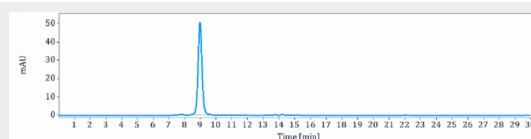
Provided below are standard protocols that you may find useful for product applications.

- [Western Blot](#)
- [Blocking Peptides](#)
- [Dot Blot](#)
- [Immunohistochemistry](#)
- [Immunofluorescence](#)
- [Immunoprecipitation](#)
- [Flow Cytometry](#)
- [Cell Culture](#)

Anti-MIF Reference Antibody (imalumab) - Images



Anti-MIF Reference Antibody (imalumab) on SDS-PAGE under reducing (R) condition. The gel was stained with Coomassie Blue. The purity of the protein is greater than 95%



The purity of Anti-MIF Reference Antibody (imalumab) is more than 95% ,determined by SEC-HPLC.