

**Anti-Staphylococcus aureus α toxin Reference Antibody (Tosatoxumab)
Recombinant Antibody
Catalog # APR10675**

Specification

Anti-Staphylococcus aureus α toxin Reference Antibody (Tosatoxumab) - Product Information

Application	FC, E, FTA
Primary Accession	NA
Reactivity	Human
Clonality	Monoclonal
Isotype	IgG1
Calculated MW	144.92 KDa

Anti-Staphylococcus aureus α toxin Reference Antibody (Tosatoxumab) - Additional Information

Target/Specificity

Staphylococcus aureus α toxin

Endotoxin

< 0.001EU/ μ g,determined by LAL method.

Conjugation

Unconjugated

Expression system

CHO Cell

Format

Purified monoclonal antibody supplied in PBS, pH6.0, without preservative.This antibody is purified through a protein A column.

Anti-Staphylococcus aureus α toxin Reference Antibody (Tosatoxumab) - Protein Information

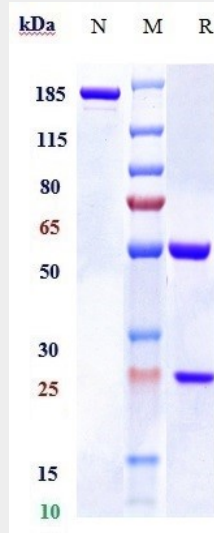
Anti-Staphylococcus aureus α toxin Reference Antibody (Tosatoxumab) - Protocols

Provided below are standard protocols that you may find useful for product applications.

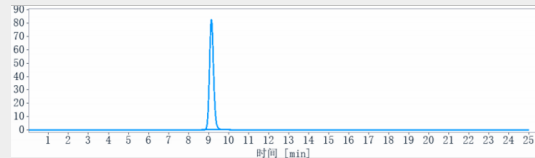
- [Western Blot](#)
- [Blocking Peptides](#)
- [Dot Blot](#)
- [Immunohistochemistry](#)
- [Immunofluorescence](#)
- [Immunoprecipitation](#)

- [Flow Cytometry](#)
- [Cell Culture](#)

Anti-Staphylococcus aureus α toxin Reference Antibody (Tosatoxumab) - Images



Anti-Staphylococcus aureus α toxin Reference Antibody (Tosatoxumab) on SDS-PAGE under reducing (R) condition. The gel was stained with Coomassie Blue. The purity of the protein is greater than 95%



The purity of Anti-Staphylococcus aureus α toxin Reference Antibody (Tosatoxumab) is more than 100.00 % ,determined by SEC-HPLC.