

**Anti-RG1 Reference Antibody (19G9)
Recombinant Antibody
Catalog # APR10657****Specification**

Anti-RG1 Reference Antibody (19G9) - Product Information

Application	FC, E, FTA
Primary Accession	NA
Reactivity	Human
Clonality	Monoclonal
Isotype	IgG1
Calculated MW	145 KDa

Anti-RG1 Reference Antibody (19G9) - Additional Information**Target/Specificity**

RG1

Endotoxin

< 0.001EU/ µg,determined by LAL method.

Conjugation

Unconjugated

Expression system

CHO Cell

Format

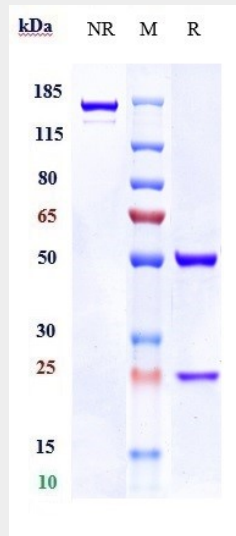
Purified monoclonal antibody supplied in PBS, pH6.0, without preservative.This antibody is purified through a protein A column.

Anti-RG1 Reference Antibody (19G9) - Protein Information**Anti-RG1 Reference Antibody (19G9) - Protocols**

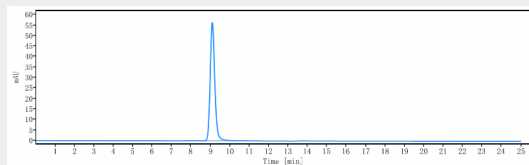
Provided below are standard protocols that you may find useful for product applications.

- [Western Blot](#)
- [Blocking Peptides](#)
- [Dot Blot](#)
- [Immunohistochemistry](#)
- [Immunofluorescence](#)
- [Immunoprecipitation](#)
- [Flow Cytometry](#)
- [Cell Culture](#)

Anti-RG1 Reference Antibody (19G9) - Images



Anti-RG1 Reference Antibody (19G9) on SDS-PAGE under reducing (R) condition. The gel was stained with Coomassie Blue. The purity of the protein is greater than 90%



The purity of Anti-RG1 Reference Antibody (19G9) is more than 95% ,determined by SEC-HPLC.