

**Anti-PTPRC / CD45 Reference Antibody (apamistamab)
Recombinant Antibody
Catalog # APR10656****Specification**

Anti-PTPRC / CD45 Reference Antibody (apamistamab) - Product Information

Application	FC, E, FTA
Primary Accession	P08575
Reactivity	Human
Clonality	Monoclonal
Isotype	IgG1
Calculated MW	146.52 KDa

Anti-PTPRC / CD45 Reference Antibody (apamistamab) - Additional Information**Target/Specificity**
PTPRC / CD45**Endotoxin**

< 0.001EU/ µg,determined by LAL method.

Conjugation

Unconjugated

Expression system

CHO Cell

Format

Purified monoclonal antibody supplied in PBS, pH6.0, without preservative.This antibody is purified through a protein A column.

Anti-PTPRC / CD45 Reference Antibody (apamistamab) - Protein Information

Name PTPRC ([HGNC:9666](#))

Synonyms CD45

Function

Protein tyrosine-protein phosphatase required for T-cell activation through the antigen receptor (PubMed:35767951). Acts as a positive regulator of T-cell coactivation upon binding to DPP4. The first PTPase domain has enzymatic activity, while the second one seems to affect the substrate specificity of the first one. Upon T-cell activation, recruits and dephosphorylates SKAP1 and FYN. Dephosphorylates LYN, and thereby modulates LYN activity (By similarity).

Cellular Location

Cell membrane; Single-pass type I membrane protein. Membrane raft. Synapse. Note=Colocalized with DPP4 in membrane rafts.

Tissue Location

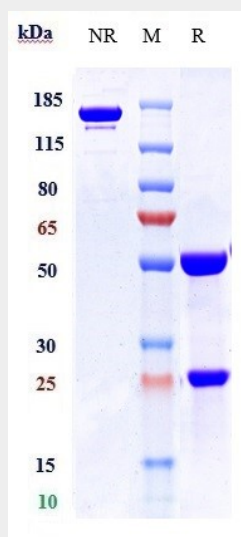
Isoform 1: Detected in thymocytes. Isoform 2: Detected in thymocytes. Isoform 3: Detected in thymocytes. Isoform 4: Not detected in thymocytes. Isoform 5: Detected in thymocytes. Isoform 6: Not detected in thymocytes. Isoform 7: Detected in thymocytes Isoform 8: Not detected in thymocytes.

Anti-PTPRC / CD45 Reference Antibody (apamistamab) - Protocols

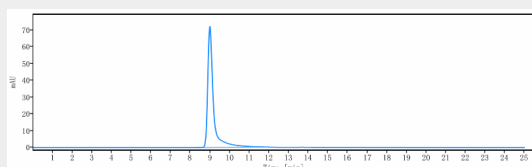
Provided below are standard protocols that you may find useful for product applications.

- [Western Blot](#)
- [Blocking Peptides](#)
- [Dot Blot](#)
- [Immunohistochemistry](#)
- [Immunofluorescence](#)
- [Immunoprecipitation](#)
- [Flow Cytometry](#)
- [Cell Culture](#)

Anti-PTPRC / CD45 Reference Antibody (apamistamab) - Images



Anti-PTPRC / CD45 Reference Antibody (apamistamab) on SDS-PAGE under reducing (R) condition. The gel was stained with Coomassie Blue. The purity of the protein is greater than 95%



The purity of Anti-PTPRC / CD45 Reference Antibody (apamistamab) is more than 99.81%, determined by SEC-HPLC.