

**Anti-Spike RBD Reference Antibody (Romlusevimab)
Recombinant Antibody
Catalog # APR10631****Specification**

Anti-Spike RBD Reference Antibody (Romlusevimab) - Product Information

Application	FC, E, FTA
Primary Accession	NA
Clonality	Monoclonal
Isotype	IgG1
Calculated MW	143.14 KDa

Anti-Spike RBD Reference Antibody (Romlusevimab) - Additional Information**Target/Specificity**

Spike RBD

Endotoxin

< 0.001EU/ µg,determined by LAL method.

Conjugation

Unconjugated

Expression system

CHO Cell

Format

Purified monoclonal antibody supplied in PBS, pH6.0, without preservative.This antibody is purified through a protein A column.

Storage

-80°C for 2 years under sterile conditions □ -20°C for 1 year under sterile conditions □ Avoid repeated freeze-thaw cycles.

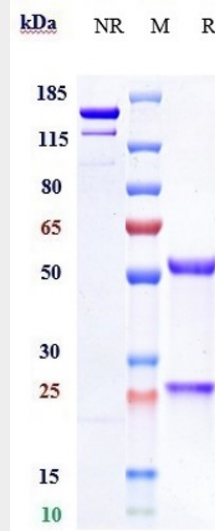
Anti-Spike RBD Reference Antibody (Romlusevimab) - Protein Information**Anti-Spike RBD Reference Antibody (Romlusevimab) - Protocols**

Provided below are standard protocols that you may find useful for product applications.

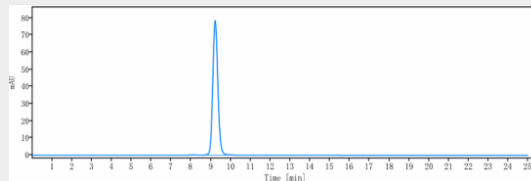
- [Western Blot](#)
- [Blocking Peptides](#)
- [Dot Blot](#)
- [Immunohistochemistry](#)
- [Immunofluorescence](#)
- [Immunoprecipitation](#)

- [Flow Cytometry](#)
- [Cell Culture](#)

Anti-Spike RBD Reference Antibody (Romlusevimab) - Images



Anti-Spike RBD Reference Antibody (Romlusevimab) on SDS-PAGE under reducing (R) condition. The gel was stained with Coomassie Blue. The purity of the protein is greater than 95%



The purity of Anti-Spike RBD Reference Antibody (Romlusevimab) is more than 100% ,determined by SEC-HPLC.