

**Anti-FGF23 Reference Antibody (burosumab)  
Recombinant Antibody  
Catalog # APR10626**

**Specification**

---

**Anti-FGF23 Reference Antibody (burosumab) - Product Information**

Application	FC, E, FTA
Primary Accession	<a href="#">O9GZV9</a>
Reactivity	Cynomolgus, Human
Clonality	Monoclonal
Isotype	IgG1
Calculated MW	144.08 KDa

**Anti-FGF23 Reference Antibody (burosumab) - Additional Information**

**Target/Specificity**  
FGF23

**Endotoxin**  
< 0.001EU/ µg,determined by LAL method.

**Conjugation**  
Unconjugated

**Expression system**  
CHO Cell

**Format**  
Purified monoclonal antibody supplied in PBS, pH6.0, without preservative.This antibody is purified through a protein A column.

**Storage**  
-80°C for 2 years under sterile conditions □ -20°C for 1 year under sterile conditions □ Avoid repeated freeze-thaw cycles.

**Anti-FGF23 Reference Antibody (burosumab) - Protein Information**

**Name** FGF23

**Synonyms** HYPF

**Function**  
Regulator of phosphate homeostasis (PubMed:[11062477](http://www.uniprot.org/citations/11062477)). Inhibits renal tubular phosphate transport by reducing SLC34A1 levels (PubMed:[11409890](http://www.uniprot.org/citations/11409890)). Up-regulates EGR1 expression in the presence of KL (By similarity). Acts directly on the parathyroid to decrease PTH secretion (By similarity). Regulator of vitamin-D metabolism (PubMed:[11409890](#)).

href="http://www.uniprot.org/citations/15040831" target="\_blank">15040831</a>). Negatively regulates osteoblast differentiation and matrix mineralization (PubMed:<a href="http://www.uniprot.org/citations/18282132" target="\_blank">18282132</a>).

#### Cellular Location

Secreted. Note=Secretion is dependent on O-glycosylation

#### Tissue Location

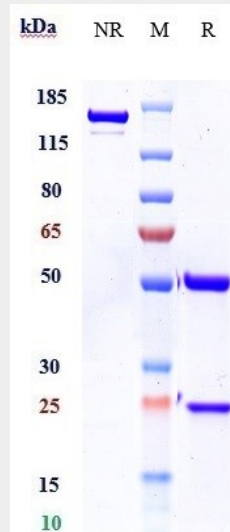
Expressed in osteogenic cells particularly during phases of active bone remodeling. In adult trabecular bone, expressed in osteocytes and flattened bone-lining cells (inactive osteoblasts)

### Anti-FGF23 Reference Antibody (burosumab) - Protocols

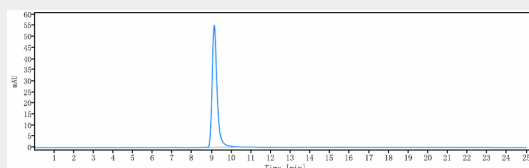
Provided below are standard protocols that you may find useful for product applications.

- [Western Blot](#)
- [Blocking Peptides](#)
- [Dot Blot](#)
- [Immunohistochemistry](#)
- [Immunofluorescence](#)
- [Immunoprecipitation](#)
- [Flow Cytometry](#)
- [Cell Culture](#)

### Anti-FGF23 Reference Antibody (burosumab) - Images



Anti-FGF23 Reference Antibody (burosumab) on SDS-PAGE under reducing (R) condition. The gel was stained with Coomassie Blue. The purity of the protein is greater than 95%



The purity of Anti-FGF23 Reference Antibody (burosumab) is more than 95%, determined by SEC-HPLC.