

**Anti-GD2 Reference Antibody (dinutuximab)  
Recombinant Antibody  
Catalog # APR10612****Specification**

---

**Anti-GD2 Reference Antibody (dinutuximab) - Product Information**

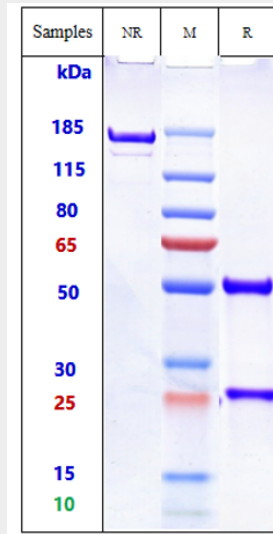
Application	FC, E, FTA
Primary Accession	<a href="#">NA</a>
Reactivity	Human, Mouse
Clonality	Monoclonal
Isotype	IgG1
Calculated MW	145 KDa

**Anti-GD2 Reference Antibody (dinutuximab) - Additional Information****Target/Specificity**  
GD2**Endotoxin**  
< 0.001EU/ µg, determined by LAL method.**Conjugation**  
Unconjugated**Expression system**  
CHO Cell**Format**  
Purified monoclonal antibody supplied in PBS, pH6.0, without preservative. This antibody is purified through a protein A column.**Anti-GD2 Reference Antibody (dinutuximab) - Protein Information****Anti-GD2 Reference Antibody (dinutuximab) - Protocols**

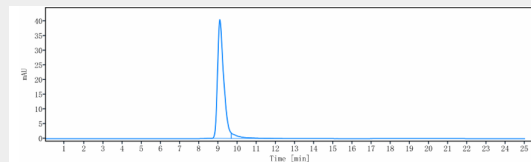
Provided below are standard protocols that you may find useful for product applications.

- [Western Blot](#)
- [Blocking Peptides](#)
- [Dot Blot](#)
- [Immunohistochemistry](#)
- [Immunofluorescence](#)
- [Immunoprecipitation](#)
- [Flow Cytometry](#)
- [Cell Culture](#)

**Anti-GD2 Reference Antibody (dinutuximab) - Images**



Anti-GD2 Reference Antibody (dinutuximab) on SDS-PAGE under reducing (R) condition. The gel was stained with Coomassie Blue. The purity of the protein is greater than 90%



The purity of Anti-GD2 Reference Antibody (dinutuximab) is more than 95% ,determined by SEC-HPLC.