

Anti-MICA Reference Antibody (CLN-619)
Recombinant Antibody
Catalog # APR10607**Specification**

Anti-MICA Reference Antibody (CLN-619) - Product Information

Application	FC, E, FTA
Primary Accession	Q29983
Reactivity	Human, Mouse
Clonality	Monoclonal
Isotype	IgG1
Calculated MW	146.06 KDa

Anti-MICA Reference Antibody (CLN-619) - Additional Information**Target/Specificity**
MICA**Endotoxin**
< 0.001EU/ µg,determined by LAL method.**Conjugation**
Unconjugated**Expression system**
CHO Cell**Format**
Purified monoclonal antibody supplied in PBS, pH6.0, without preservative.This antibody is purified through a protein A column.**Anti-MICA Reference Antibody (CLN-619) - Protein Information****Name** MICA {ECO:0000312|EMBL:CAI41907.1}**Function**

Widely expressed membrane-bound protein which acts as a ligand to stimulate an activating receptor KLRK1/NKG2D, expressed on the surface of essentially all human natural killer (NK), gammadelta T and CD8 alphabeta T-cells (PubMed:11491531, PubMed:11777960). Up-regulated in stressed conditions, such as viral and bacterial infections or DNA damage response, serves as signal of cellular stress, and engagement of KLRK1/NKG2D by MICA triggers NK-cells resulting in a range of immune effector functions, such as cytotoxicity and cytokine production (PubMed:10426993).

Cellular Location

Cell membrane; Single-pass type I membrane protein. Cytoplasm Note=Expressed on the cell

surface in gastric epithelium, endothelial cells and fibroblasts and in the cytoplasm in keratinocytes and monocytes. Infection with human adenovirus 5 suppresses cell surface expression due to the adenoviral E3-19K protein which causes retention in the endoplasmic reticulum.

Tissue Location

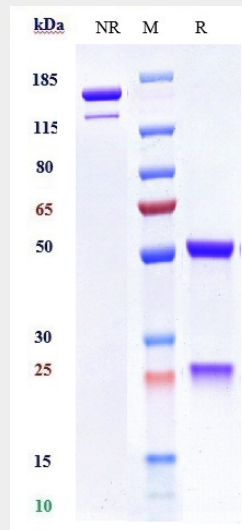
Widely expressed with the exception of the central nervous system where it is absent. Expressed predominantly in gastric epithelium and also in monocytes, keratinocytes, endothelial cells, fibroblasts and in the outer layer of Hassal's corpuscles within the medulla of normal thymus. In skin, expressed mainly in the keratin layers, basal cells, ducts and follicles. Also expressed in many, but not all, epithelial tumors of lung, breast, kidney, ovary, prostate and colon. In thymomas, overexpressed in cortical and medullar epithelial cells. Tumors expressing MICA display increased levels of gamma delta T-cells.

Anti-MICA Reference Antibody (CLN-619) - Protocols

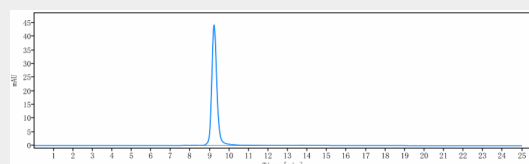
Provided below are standard protocols that you may find useful for product applications.

- [Western Blot](#)
- [Blocking Peptides](#)
- [Dot Blot](#)
- [Immunohistochemistry](#)
- [Immunofluorescence](#)
- [Immunoprecipitation](#)
- [Flow Cytometry](#)
- [Cell Culture](#)

Anti-MICA Reference Antibody (CLN-619) - Images



Anti-MICA Reference Antibody (CLN-619) on SDS-PAGE under reducing (R) condition. The gel was stained with Coomassie Blue. The purity of the protein is greater than 90%



The purity of Anti-MICA Reference Antibody (CLN-619) is more than 95% ,determined by SEC-HPLC.