

**Anti-TROP2 Reference Antibody (datopotamab deruxtecan)
Recombinant Antibody
Catalog # APR10586**

Specification

Anti-TROP2 Reference Antibody (datopotamab deruxtecan) - Product Information

Application	FC, E, FTA
Primary Accession	P09758
Reactivity	Rat, Cynomolgus, Human
Clonality	Monoclonal
Isotype	IgG1
Calculated MW	149.3 KDa

Anti-TROP2 Reference Antibody (datopotamab deruxtecan) - Additional Information

Target/Specificity
TROP2

Endotoxin
< 0.001EU/ µg,determined by LAL method.

Conjugation
Dxd

Expression system
CHO Cell

Format
Purified monoclonal antibody supplied in PBS, pH6.0, without preservative.This antibody is purified through a protein A column.

Anti-TROP2 Reference Antibody (datopotamab deruxtecan) - Protein Information

Name TACSTD2

Synonyms GA733-1, M1S1, TROP2

Function
May function as a growth factor receptor.

Cellular Location
Membrane; Single-pass type I membrane protein.

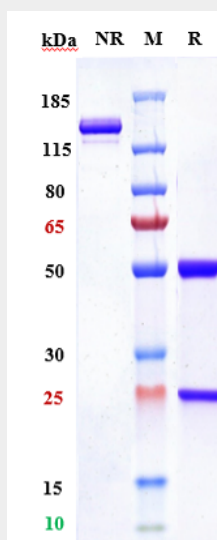
Tissue Location
Placenta, pancreatic carcinoma cell lines.

Anti-TROP2 Reference Antibody (datopotamab deruxtecan) - Protocols

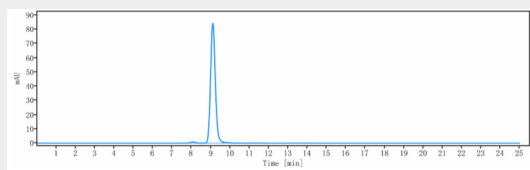
Provided below are standard protocols that you may find useful for product applications.

- [Western Blot](#)
- [Blocking Peptides](#)
- [Dot Blot](#)
- [Immunohistochemistry](#)
- [Immunofluorescence](#)
- [Immunoprecipitation](#)
- [Flow Cytometry](#)
- [Cell Culture](#)

Anti-TROP2 Reference Antibody (datopotamab deruxtecan) - Images



Anti-TROP2 Reference Antibody (datopotamab deruxtecan) on SDS-PAGE under reducing (R) condition. The gel was stained with Coomassie Blue. The purity of the protein is greater than 95%



The purity of Anti-TROP2 Reference Antibody (datopotamab deruxtecan) is more than 98.09%, determined by SEC-HPLC.