

**Anti-RGMA Reference Antibody (elezanumab)**  
**Recombinant Antibody**  
**Catalog # APR10582**

**Specification**

---

**Anti-RGMA Reference Antibody (elezanumab) - Product Information**

Application	FC, E, FTA
Primary Accession	<a href="#">O96B86</a>
Reactivity	Rat, Cynomolgus, Human, Mouse
Clonality	Monoclonal
Isotype	IgG1
Calculated MW	150 KDa

**Anti-RGMA Reference Antibody (elezanumab) - Additional Information**

**Target/Specificity**  
RGMA

**Endotoxin**  
< 0.001EU/ µg,determined by LAL method.

**Conjugation**  
Unconjugated

**Expression system**  
CHO Cell

**Format**  
Purified monoclonal antibody supplied in PBS, pH6.0, without preservative.This antibody is purified through a protein A column.

**Storage**  
-80°C for 2 years under sterile conditions □ -20°C for 1 year under sterile conditions □ Avoid repeated freeze-thaw cycles.

**Anti-RGMA Reference Antibody (elezanumab) - Protein Information**

**Name** RGMA ([HGNC:30308](#))

**Synonyms** RGM

**Function**  
Member of the repulsive guidance molecule (RGM) family that performs several functions in the developing and adult nervous system. Regulates cephalic neural tube closure, inhibits neurite outgrowth and cortical neuron branching, and the formation of mature synapses. Binding to its receptor NEO1/neogenin induces activation of RHOA- ROCK1/Rho-kinase signaling pathway through UNC5B-ARHGEF12/LARG- PTK2/FAK1 cascade, leading to collapse of the neuronal growth cone and neurite outgrowth inhibition. Furthermore, RGMA binding to NEO1/neogenin leads to

HRAS inactivation by influencing HRAS-PTK2/FAK1- AKT1 pathway. It also functions as a bone morphogenetic protein (BMP) coreceptor that may signal through SMAD1, SMAD5, and SMAD8.

#### Cellular Location

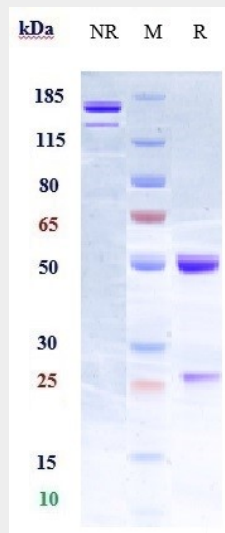
Cell membrane; Lipid-anchor, GPI- anchor

#### Anti-RGMA Reference Antibody (elezanumab) - Protocols

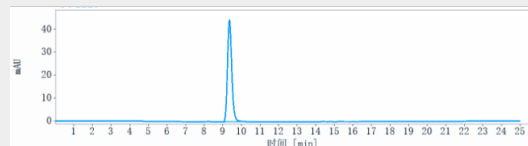
Provided below are standard protocols that you may find useful for product applications.

- [Western Blot](#)
- [Blocking Peptides](#)
- [Dot Blot](#)
- [Immunohistochemistry](#)
- [Immunofluorescence](#)
- [Immunoprecipitation](#)
- [Flow Cytometry](#)
- [Cell Culture](#)

#### Anti-RGMA Reference Antibody (elezanumab) - Images



Anti-RGMA Reference Antibody (elezanumab) on SDS-PAGE under reducing (R) condition. The gel was stained with Coomassie Blue. The purity of the protein is greater than 95%



The purity of Anti-RGMA Reference Antibody (elezanumab) is more than 100% ,determined by SEC-HPLC.