

**Anti-SOST / Sclerostin Reference Antibody (romosozumab)
Recombinant Antibody
Catalog # APR10572**

Specification

Anti-SOST / Sclerostin Reference Antibody (romosozumab) - Product Information

Application	FC, E, FTA
Primary Accession	O9BOB4
Reactivity	Cynomolgus, Human, Mouse
Clonality	Monoclonal
Isotype	IgG2SA
Calculated MW	146.32 KDa

Anti-SOST / Sclerostin Reference Antibody (romosozumab) - Additional Information

Target/Specificity
SOST / Sclerostin

Endotoxin
< 0.001EU/ µg,determined by LAL method.

Conjugation
Unconjugated

Expression system
CHO Cell

Format
Purified monoclonal antibody supplied in PBS, pH6.0, without preservative.This antibody is purified through a protein A column.

Anti-SOST / Sclerostin Reference Antibody (romosozumab) - Protein Information

Name SOST ([HGNC:13771](#))

Function
Negative regulator of bone growth that acts through inhibition of Wnt signaling and bone formation.

Cellular Location
Secreted, extracellular space, extracellular matrix

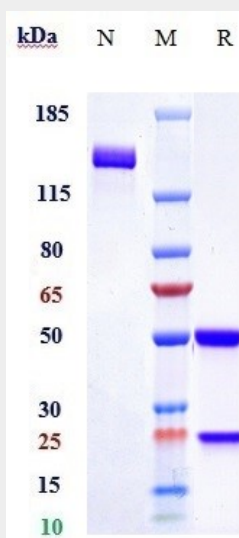
Tissue Location
Widely expressed at low levels with highest levels in bone, cartilage, kidney, liver, bone marrow and primary osteoblasts differentiated for 21 days. Detected in the subendothelial layer of the aortic intima (at protein level).

Anti-SOST / Sclerostin Reference Antibody (romosozumab) - Protocols

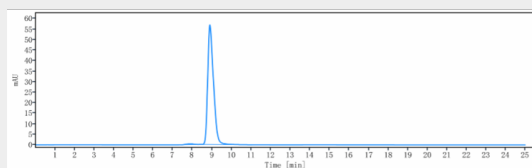
Provided below are standard protocols that you may find useful for product applications.

- [Western Blot](#)
- [Blocking Peptides](#)
- [Dot Blot](#)
- [Immunohistochemistry](#)
- [Immunofluorescence](#)
- [Immunoprecipitation](#)
- [Flow Cytometry](#)
- [Cell Culture](#)

Anti-SOST / Sclerostin Reference Antibody (romosozumab) - Images



Anti-SOST / Sclerostin Reference Antibody (romosozumab) on SDS-PAGE under reducing (R) condition. The gel was stained with Coomassie Blue. The purity of the protein is greater than 95%



The purity of Anti-SOST / Sclerostin Reference Antibody (romosozumab) is more than 99.11%, determined by SEC-HPLC.