

**Anti-FcγR2a / CD32a Reference Antibody (VIB9600)**  
**Recombinant Antibody**  
**Catalog # APR10569**

**Specification**

---

**Anti-FcγR2a / CD32a Reference Antibody (VIB9600) - Product Information**

Application	FC, E, FTA
Primary Accession	<a href="#">P12318</a>
Reactivity	Cynomolgus, Human
Clonality	Monoclonal
Isotype	IgG1
Calculated MW	150 KDa

**Anti-FcγR2a / CD32a Reference Antibody (VIB9600) - Additional Information**

**Target/Specificity**  
FcγR2a / CD32a

**Endotoxin**  
< 0.001EU/ μg, determined by LAL method.

**Conjugation**  
Unconjugated

**Expression system**  
CHO Cell

**Format**  
Purified monoclonal antibody supplied in PBS, pH6.0, without preservative. This antibody is purified through a protein A column.

**Anti-FcγR2a / CD32a Reference Antibody (VIB9600) - Protein Information**

**Name** FCGR2A

**Synonyms** CD32, FCG2, FCGR2A1, IGFR2

**Function**  
Binds to the Fc region of immunoglobulins gamma. Low affinity receptor. By binding to IgG it initiates cellular responses against pathogens and soluble antigens. Promotes phagocytosis of opsonized antigens.

**Cellular Location**  
Cell membrane; Single-pass type I membrane protein

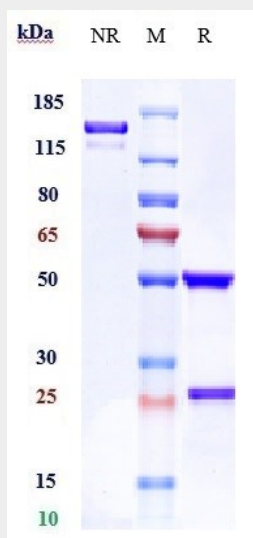
**Tissue Location**  
Found on monocytes, neutrophils and eosinophil platelets

## Anti-FcγR2a / CD32a Reference Antibody (VIB9600) - Protocols

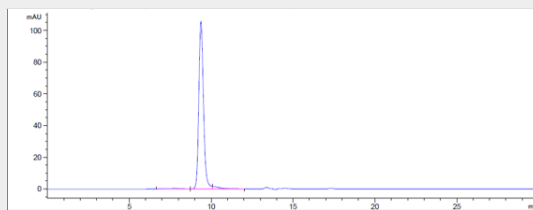
Provided below are standard protocols that you may find useful for product applications.

- [Western Blot](#)
- [Blocking Peptides](#)
- [Dot Blot](#)
- [Immunohistochemistry](#)
- [Immunofluorescence](#)
- [Immunoprecipitation](#)
- [Flow Cytometry](#)
- [Cell Culture](#)

## Anti-FcγR2a / CD32a Reference Antibody (VIB9600) - Images



Anti-FcγR2a / CD32a Reference Antibody (VIB9600) on SDS-PAGE under reducing (R) condition. The gel was stained with Coomassie Blue. The purity of the protein is greater than 90%



The purity of Anti-FcγR2a / CD32a Reference Antibody (VIB9600) is more than 95% ,determined by SEC-HPLC.