

**Anti-CD46 Reference Antibody (FOR46)**  
**Recombinant Antibody**  
**Catalog # APR10567**

**Specification**

---

**Anti-CD46 Reference Antibody (FOR46) - Product Information**

Application	FC, E, FTA
Primary Accession	<a href="#">P15529</a>
Reactivity	Cynomolgus, Human
Clonality	Monoclonal
Isotype	IgG1
Calculated MW	143.6 KDa

**Anti-CD46 Reference Antibody (FOR46) - Additional Information**

**Target/Specificity**  
CD46

**Endotoxin**  
< 0.001EU/ µg,determined by LAL method.

**Conjugation**  
Unconjugated

**Expression system**  
CHO Cell

**Format**  
Purified monoclonal antibody supplied in PBS, pH6.0, without preservative.This antibody is purified through a protein A column.

**Anti-CD46 Reference Antibody (FOR46) - Protein Information**

**Name** CD46

**Synonyms** MCP, MIC10

**Function**  
Acts as a cofactor for complement factor I, a serine protease which protects autologous cells against complement-mediated injury by cleaving C3b and C4b deposited on host tissue. May be involved in the fusion of the spermatozoa with the oocyte during fertilization. Also acts as a costimulatory factor for T-cells which induces the differentiation of CD4+ into T-regulatory 1 cells. T-regulatory 1 cells suppress immune responses by secreting interleukin-10, and therefore are thought to prevent autoimmunity.

**Cellular Location**  
Cytoplasmic vesicle, secretory vesicle, acrosome inner membrane; Single-pass type I membrane protein. Note=Inner acrosomal membrane of spermatozoa. Internalized upon binding of Measles

virus, Herpesvirus 6 or Neisseria gonorrhoeae, which results in an increased susceptibility of infected cells to complement-mediated injury. In cancer cells or cells infected by Neisseria, shedding leads to a soluble peptide

#### Tissue Location

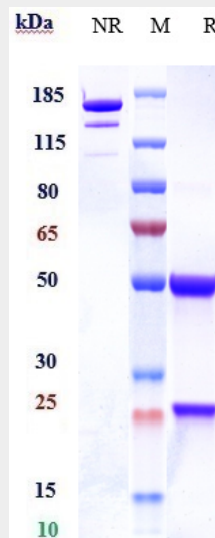
Expressed by all cells except erythrocytes.

#### Anti-CD46 Reference Antibody (FOR46) - Protocols

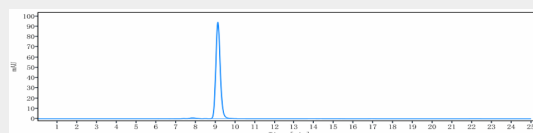
Provided below are standard protocols that you may find useful for product applications.

- [Western Blot](#)
- [Blocking Peptides](#)
- [Dot Blot](#)
- [Immunohistochemistry](#)
- [Immunofluorescence](#)
- [Immunoprecipitation](#)
- [Flow Cytometry](#)
- [Cell Culture](#)

#### Anti-CD46 Reference Antibody (FOR46) - Images



Anti-CD46 Reference Antibody (FOR46) on SDS-PAGE under reducing (R) condition. The gel was stained with Coomassie Blue. The purity of the protein is greater than 95%



The purity of Anti-CD46 Reference Antibody (FOR46) is more than 98.24% ,determined by SEC-HPLC.