

Anti-CB1 / CNR1 Reference Antibody (GFB-024)
Recombinant Antibody
Catalog # APR10556

Specification

Anti-CB1 / CNR1 Reference Antibody (GFB-024) - Product Information

Application	FC, E, FTA
Primary Accession	Q96F85
Reactivity	Human
Clonality	Monoclonal
Isotype	IgG1
Calculated MW	145 KDa

Anti-CB1 / CNR1 Reference Antibody (GFB-024) - Additional Information

Target/Specificity
CB1 / CNR1

Endotoxin
< 0.001EU/ µg,determined by LAL method.

Conjugation
Unconjugated

Expression system
CHO Cell

Format
Purified monoclonal antibody supplied in PBS, pH6.0, without preservative.This antibody is purified through a protein A column.

Anti-CB1 / CNR1 Reference Antibody (GFB-024) - Protein Information

Name CNRIP1

Synonyms C2orf32

Function
[Isoform 1]: Suppresses cannabinoid receptor CNR1-mediated tonic inhibition of voltage-gated calcium channels.

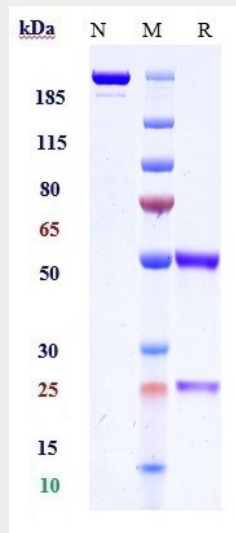
Anti-CB1 / CNR1 Reference Antibody (GFB-024) - Protocols

Provided below are standard protocols that you may find useful for product applications.

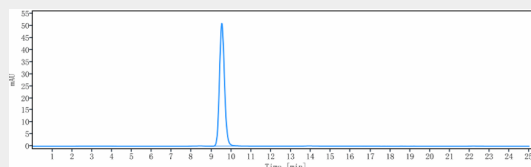
- [Western Blot](#)

- [Blocking Peptides](#)
- [Dot Blot](#)
- [Immunohistochemistry](#)
- [Immunofluorescence](#)
- [Immunoprecipitation](#)
- [Flow Cytometry](#)
- [Cell Culture](#)

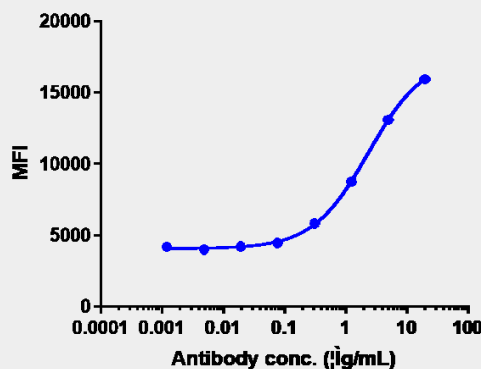
Anti-CB1 / CNR1 Reference Antibody (GFB-024) - Images



Anti-CB1 / CNR1 Reference Antibody (GFB-024) on SDS-PAGE under reducing (R) condition. The gel was stained with Coomassie Blue. The purity of the protein is greater than 90%



The purity of Anti-CB1 / CNR1 Reference Antibody (GFB-024) is more than 95%, determined by SEC-HPLC.



Human CB1 EGFP CHOS cells were stained with Anti-CB1 / CNR1 Reference Antibody (GFB-024) and negative control protein respectively, washed and then followed by PE and analyzed with FACS, EC622=2.363 µg/mL