

**Anti-AMHR2 Reference Antibody (murlentamab)**  
**Recombinant Antibody**  
**Catalog # APR10553**

**Specification**

---

**Anti-AMHR2 Reference Antibody (murlentamab) - Product Information**

Application	FC, E, FTA
Primary Accession	<a href="#">Q16671</a>
Reactivity	Cynomolgus, Human
Clonality	Monoclonal
Isotype	IgG1
Calculated MW	144.56 KDa

**Anti-AMHR2 Reference Antibody (murlentamab) - Additional Information**

**Target/Specificity**  
AMHR2

**Endotoxin**  
< 0.001EU/ µg,determined by LAL method.

**Conjugation**  
Unconjugated

**Expression system**  
CHO Cell

**Format**  
Purified monoclonal antibody supplied in PBS, pH6.0, without preservative.This antibody is purified through a protein A column.

**Anti-AMHR2 Reference Antibody (murlentamab) - Protein Information**

**Name** AMHR2

**Synonyms** AMHR, MISR2

**Function**  
On ligand binding, forms a receptor complex consisting of two type II and two type I transmembrane serine/threonine kinases. Type II receptors phosphorylate and activate type I receptors which autophosphorylate, then bind and activate SMAD transcriptional regulators. Receptor for anti-Muellerian hormone.

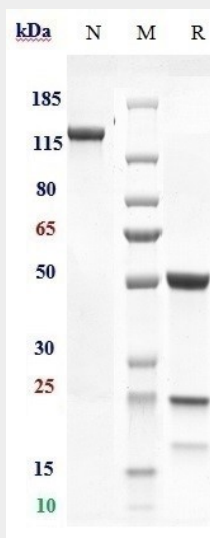
**Cellular Location**  
Membrane; Single-pass type I membrane protein.

## Anti-AMHR2 Reference Antibody (murlentamab) - Protocols

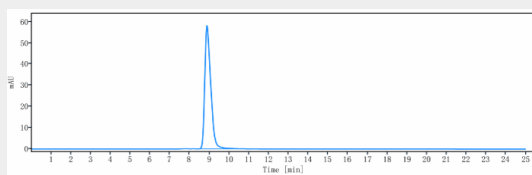
Provided below are standard protocols that you may find useful for product applications.

- [Western Blot](#)
- [Blocking Peptides](#)
- [Dot Blot](#)
- [Immunohistochemistry](#)
- [Immunofluorescence](#)
- [Immunoprecipitation](#)
- [Flow Cytometry](#)
- [Cell Culture](#)

## Anti-AMHR2 Reference Antibody (murlentamab) - Images



Anti-AMHR2 Reference Antibody (murlentamab) on SDS-PAGE under reducing (R) condition. The gel was stained with Coomassie Blue. The purity of the protein is greater than 93%



The purity of Anti-AMHR2 Reference Antibody (murlentamab) is more than 100%, determined by SEC-HPLC.