

**Anti-CD20 Reference Antibody (veltuzumab)
Recombinant Antibody
Catalog # APR10541**

Specification

Anti-CD20 Reference Antibody (veltuzumab) - Product Information

Application	FC, E, FTA
Primary Accession	P11836
Reactivity	Human
Clonality	Monoclonal
Isotype	IgG1
Calculated MW	145 KDa

Anti-CD20 Reference Antibody (veltuzumab) - Additional Information

Target/Specificity
CD20

Endotoxin
< 0.001EU/ µg,determined by LAL method.

Conjugation
Unconjugated

Expression system
CHO Cell

Format
Purified monoclonal antibody supplied in PBS, pH6.0, without preservative.This antibody is purified through a protein A column.

Anti-CD20 Reference Antibody (veltuzumab) - Protein Information

Name MS4A1

Synonyms CD20

Function
B-lymphocyte-specific membrane protein that plays a role in the regulation of cellular calcium influx necessary for the development, differentiation, and activation of B-lymphocytes (PubMed:12920111, PubMed:3925015, PubMed:7684739). Functions as a store-operated calcium (SOC) channel component promoting calcium influx after activation by the B-cell receptor/BCR (PubMed:12920111, PubMed:18474602, PubMed:7684739).

Cellular Location

Cell membrane; Multi-pass membrane protein. Cell membrane; Lipid-anchor. Note=Constitutively associated with membrane rafts.

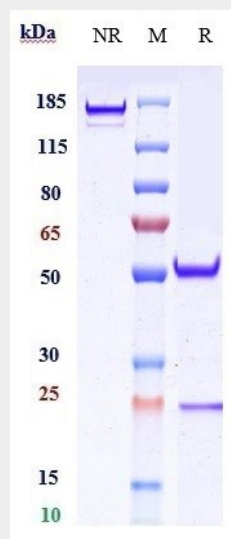
Tissue Location

Expressed on B-cells.

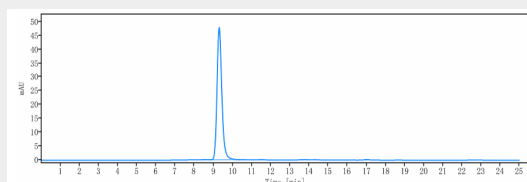
Anti-CD20 Reference Antibody (veltuzumab) - Protocols

Provided below are standard protocols that you may find useful for product applications.

- [Western Blot](#)
- [Blocking Peptides](#)
- [Dot Blot](#)
- [Immunohistochemistry](#)
- [Immunofluorescence](#)
- [Immunoprecipitation](#)
- [Flow Cytometry](#)
- [Cell Culture](#)

Anti-CD20 Reference Antibody (veltuzumab) - Images

Anti-CD20 Reference Antibody (veltuzumab) on SDS-PAGE under reducing (R) condition. The gel was stained with Coomassie Blue. The purity of the protein is greater than 95%



The purity of Anti-CD20 Reference Antibody (veltuzumab) is more than 95% ,determined by SEC-HPLC.