

**Anti-TNFRSF10A / TRAILR1 / CD261 Reference Antibody (mapatumumab)
Recombinant Antibody
Catalog # APR10535**

Specification

Anti-TNFRSF10A / TRAILR1 / CD261 Reference Antibody (mapatumumab) - Product Information

Application	FC, E, FTA
Primary Accession	O00220
Reactivity	Human
Clonality	Monoclonal
Isotype	IgG2SA
Calculated MW	145 KDa

Anti-TNFRSF10A / TRAILR1 / CD261 Reference Antibody (mapatumumab) - Additional Information

Target/Specificity

TNFRSF10A / TRAILR1 / CD261

Endotoxin

< 0.001EU/ µg,determined by LAL method.

Conjugation

Unconjugated

Expression system

CHO Cell

Format

Purified monoclonal antibody supplied in PBS, pH6.0, without preservative.This antibody is purified through a protein A column.

Anti-TNFRSF10A / TRAILR1 / CD261 Reference Antibody (mapatumumab) - Protein Information

Name TNFRSF10A

Synonyms APO2, DR4, TRAILR1

Function

Receptor for the cytotoxic ligand TNFSF10/TRAIL (PubMed:26457518, PubMed:38532423). The adapter molecule FADD recruits caspase-8 to the activated receptor. The resulting death-inducing signaling complex (DISC) performs caspase-8 proteolytic activation which initiates the subsequent cascade of caspases (aspartate-specific cysteine proteases) mediating apoptosis (PubMed:19090789). Promotes the

activation of NF-kappa-B (PubMed: 9430227).

Cellular Location

Cell membrane; Single-pass type I membrane protein. Membrane raft. Cytoplasm, cytosol.
Note=Palmitoylation is required for association with membranes.

Tissue Location

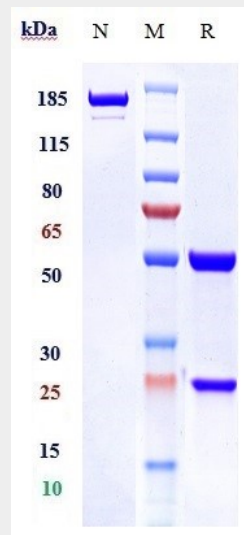
Widely expressed. High levels are found in spleen, peripheral blood leukocytes, small intestine and thymus, but also in K- 562 erythroleukemia cells, MCF-7 breast carcinoma cells and activated T-cells

Anti-TNFRSF10A / TRAILR1 / CD261 Reference Antibody (mapatumumab) - Protocols

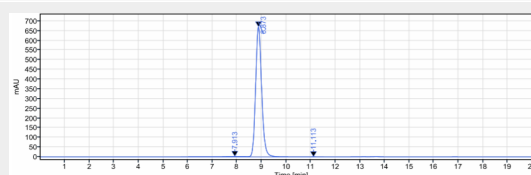
Provided below are standard protocols that you may find useful for product applications.

- [Western Blot](#)
- [Blocking Peptides](#)
- [Dot Blot](#)
- [Immunohistochemistry](#)
- [Immunofluorescence](#)
- [Immunoprecipitation](#)
- [Flow Cytometry](#)
- [Cell Culture](#)

Anti-TNFRSF10A / TRAILR1 / CD261 Reference Antibody (mapatumumab) - Images



Anti-TNFRSF10A / TRAILR1 / CD261 Reference Antibody (mapatumumab) on SDS-PAGE under reducing (R) condition. The gel was stained with Coomassie Blue. The purity of the protein is greater than 95%



The purity of Anti-TNFRSF10A / TRAILR1 / CD261 Reference Antibody (mapatumumab) is more than 98.89% ,determined by SEC-HPLC.