

**Anti-L-selectin Reference Antibody (Aselizumab)
Recombinant Antibody
Catalog # APR10527****Specification**

Anti-L-selectin Reference Antibody (Aselizumab) - Product Information

| | |
|-------------------|------------------------|
| Application | FC, E, FTA |
| Primary Accession | P14151 |
| Reactivity | Human |
| Clonality | Monoclonal |
| Isotype | IgG2A |
| Calculated MW | 145 KDa |

Anti-L-selectin Reference Antibody (Aselizumab) - Additional Information**Target/Specificity**
L-selectin**Endotoxin**
< 0.001EU/ µg,determined by LAL method.**Conjugation**
Unconjugated**Expression system**
CHO Cell**Format**
Purified monoclonal antibody supplied in PBS, pH6.0, without preservative.This antibody is purified through a protein A column.**Anti-L-selectin Reference Antibody (Aselizumab) - Protein Information****Name** SELL**Synonyms** LNHR, LYAM1**Function**

Calcium-dependent lectin that mediates cell adhesion by binding to glycoproteins on neighboring cells (PubMed: [12403782](http://www.uniprot.org/citations/12403782)), PubMed: [28011641](http://www.uniprot.org/citations/28011641), PubMed: [28489325](http://www.uniprot.org/citations/28489325)). Mediates the adherence of lymphocytes to endothelial cells of high endothelial venules in peripheral lymph nodes. Promotes initial tethering and rolling of leukocytes in endothelia (PubMed: [12403782](http://www.uniprot.org/citations/12403782), PubMed: [28011641](http://www.uniprot.org/citations/28011641)).

Cellular Location

Cell membrane; Single-pass type I membrane protein

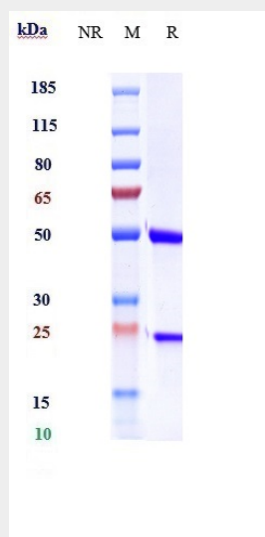
Tissue Location

Expressed in B-cell lines and T-lymphocytes.

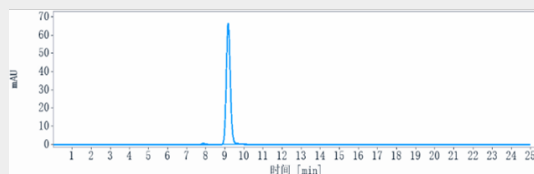
Anti-L-selectin Reference Antibody (Aselizumab) - Protocols

Provided below are standard protocols that you may find useful for product applications.

- [Western Blot](#)
- [Blocking Peptides](#)
- [Dot Blot](#)
- [Immunohistochemistry](#)
- [Immunofluorescence](#)
- [Immunoprecipitation](#)
- [Flow Cytometry](#)
- [Cell Culture](#)

Anti-L-selectin Reference Antibody (Aselizumab) - Images

Anti-L-selectin Reference Antibody (Aselizumab) on SDS-PAGE under reducing (R) condition. The gel was stained with Coomassie Blue. The purity of the protein is greater than 90%



The purity of Anti-L-selectin Reference Antibody (Aselizumab) is more than 95%, determined by SEC-HPLC.