

**Anti-Siglec-3 / CD33 Reference Antibody (lintuzumAb)  
Recombinant Antibody  
Catalog # APR10525**

**Specification**

---

**Anti-Siglec-3 / CD33 Reference Antibody (lintuzumAb) - Product Information**

Application	FC, E, FTA
Primary Accession	<a href="#">O14793</a>
Reactivity	Human
Clonality	Monoclonal
Isotype	IgG1
Calculated MW	145 KDa

**Anti-Siglec-3 / CD33 Reference Antibody (lintuzumAb) - Additional Information**

**Target/Specificity**  
GDF8 / Myostatin

**Endotoxin**  
< 0.001EU/ µg,determined by LAL method.

**Conjugation**  
Unconjugated

**Expression system**  
CHO Cell

**Format**  
Purified monoclonal antibody supplied in PBS, pH6.0, without preservative.This antibody is purified through a protein A column.

**Anti-Siglec-3 / CD33 Reference Antibody (lintuzumAb) - Protein Information**

**Name** MSTN

**Synonyms** GDF8

**Function**  
Acts specifically as a negative regulator of skeletal muscle growth.

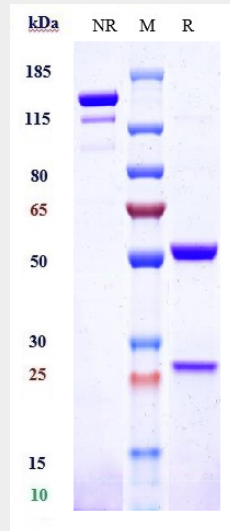
**Cellular Location**  
Secreted {ECO:0000250|UniProtKB:O08689}.

**Anti-Siglec-3 / CD33 Reference Antibody (lintuzumAb) - Protocols**

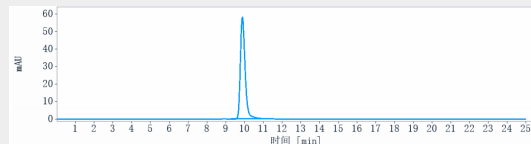
Provided below are standard protocols that you may find useful for product applications.

- [Western Blot](#)
- [Blocking Peptides](#)
- [Dot Blot](#)
- [Immunohistochemistry](#)
- [Immunofluorescence](#)
- [Immunoprecipitation](#)
- [Flow Cytometry](#)
- [Cell Culture](#)

### Anti-Siglec-3 / CD33 Reference Antibody (lintuzumAb) - Images



Anti-Siglec-3 / CD33 Reference Antibody (lintuzumAb) on SDS-PAGE under reducing (R) condition. The gel was stained with Coomassie Blue. The purity of the protein is greater than 90%



The purity of Anti-Siglec-3 / CD33 Reference Antibody (lintuzumAb) is more than 95% ,determined by SEC-HPLC.