

**Anti-CD20 Reference Antibody (ofatumumab)
Recombinant Antibody
Catalog # APR10520****Specification**

Anti-CD20 Reference Antibody (ofatumumab) - Product Information

| | |
|-------------------|------------------------|
| Application | FC, E, FTA |
| Primary Accession | P11836 |
| Reactivity | Cynomolgus, Human |
| Clonality | Monoclonal |
| Isotype | IgG1 |
| Calculated MW | 145.94 KDa |

Anti-CD20 Reference Antibody (ofatumumab) - Additional Information**Target/Specificity**
CD20**Endotoxin**
< 0.001EU/ µg, determined by LAL method.**Conjugation**
Unconjugated**Expression system**
CHO Cell**Format**
Purified monoclonal antibody supplied in PBS, pH6.0, without preservative. This antibody is purified through a protein A column.**Anti-CD20 Reference Antibody (ofatumumab) - Protein Information****Name** MS4A1**Synonyms** CD20**Function**
B-lymphocyte-specific membrane protein that plays a role in the regulation of cellular calcium influx necessary for the development, differentiation, and activation of B-lymphocytes (PubMed: [12920111](http://www.uniprot.org/citations/12920111), PubMed: [3925015](http://www.uniprot.org/citations/3925015), PubMed: [7684739](http://www.uniprot.org/citations/7684739)). Functions as a store-operated calcium (SOC) channel component promoting calcium influx after activation by the B-cell receptor/BCR (PubMed: [12920111](http://www.uniprot.org/citations/12920111), PubMed: [18474602](http://www.uniprot.org/citations/18474602), PubMed: [7684739](http://www.uniprot.org/citations/7684739)).

Cellular Location

Cell membrane; Multi-pass membrane protein. Cell membrane; Lipid-anchor. Note=Constitutively associated with membrane rafts.

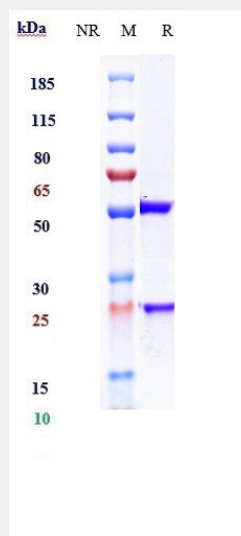
Tissue Location

Expressed on B-cells.

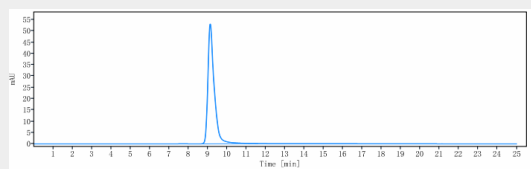
Anti-CD20 Reference Antibody (ofatumumab) - Protocols

Provided below are standard protocols that you may find useful for product applications.

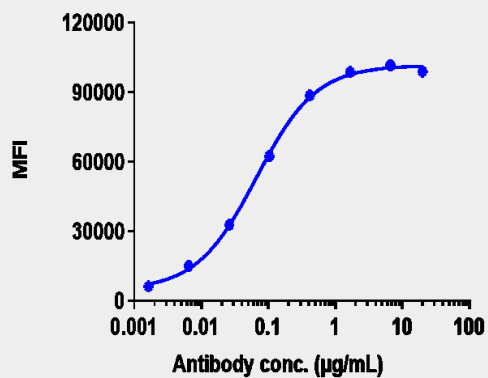
- [Western Blot](#)
- [Blocking Peptides](#)
- [Dot Blot](#)
- [Immunohistochemistry](#)
- [Immunofluorescence](#)
- [Immunoprecipitation](#)
- [Flow Cytometry](#)
- [Cell Culture](#)

Anti-CD20 Reference Antibody (ofatumumab) - Images

Anti-CD20 Reference Antibody (ofatumumab) on SDS-PAGE under reducing (R) condition. The gel was stained with Coomassie Blue. The purity of the protein is greater than 95%



The purity of Anti-CD20 Reference Antibody (ofatumumab) is more than 100% ,determined by SEC-HPLC.



Romas cells were stained with Anti-CD20 Reference Antibody (ofatumumab) and negative control protein respectively, washed and then followed by PE and analyzed with FACS, EC50=0.06641 µg/mL