

**Anti-F3 / Factor III / Tissue Factor / CD142 Reference Antibody (tisotumab)
Recombinant Antibody
Catalog # APR10519****Specification**

Anti-F3 / Factor III / Tissue Factor / CD142 Reference Antibody (tisotumab) - Product Information

Application	FC, E, FTA
Primary Accession	P13726
Reactivity	Cynomolgus, Human
Clonality	Monoclonal
Isotype	IgG1
Calculated MW	144.66 KDa

Anti-F3 / Factor III / Tissue Factor / CD142 Reference Antibody (tisotumab) - Additional Information**Target/Specificity**

F3 / Factor III / Tissue Factor / CD142

Endotoxin

< 0.001EU/ µg,determined by LAL method.

Conjugation

Unconjugated

Expression system

CHO Cell

Format

Purified monoclonal antibody supplied in PBS, pH6.0, without preservative.This antibody is purified through a protein A column.

Anti-F3 / Factor III / Tissue Factor / CD142 Reference Antibody (tisotumab) - Protein Information**Name** F3**Function**

Initiates blood coagulation by forming a complex with circulating factor VII or VIIa. The [TF:VIIa] complex activates factors IX or X by specific limited proteolysis. TF plays a role in normal hemostasis by initiating the cell-surface assembly and propagation of the coagulation protease cascade.

Cellular Location

[Isoform 1]: Membrane; Single-pass type I membrane protein

Tissue Location

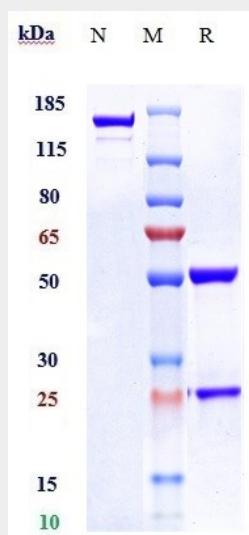
Lung, placenta and pancreas.

Anti-F3 / Factor III / Tissue Factor / CD142 Reference Antibody (tisotumab) - Protocols

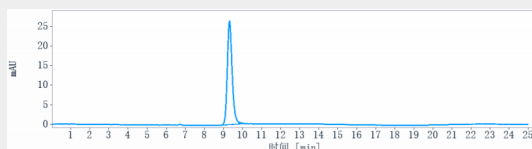
Provided below are standard protocols that you may find useful for product applications.

- [Western Blot](#)
- [Blocking Peptides](#)
- [Dot Blot](#)
- [Immunohistochemistry](#)
- [Immunofluorescence](#)
- [Immunoprecipitation](#)
- [Flow Cytometry](#)
- [Cell Culture](#)

Anti-F3 / Factor III / Tissue Factor / CD142 Reference Antibody (tisotumab) - Images



Anti-F3 / Factor III / Tissue Factor / CD142 Reference Antibody (tisotumab) on SDS-PAGE under reducing (R) condition. The gel was stained with Coomassie Blue. The purity of the protein is greater than 95%



The purity of Anti-F3 / Factor III / Tissue Factor / CD142 Reference Antibody (tisotumab) is more than 99.08%, determined by SEC-HPLC.