

**Anti-TNFRSF10B / TRAILR2 / CD262 Reference Antibody (benufutamab)  
Recombinant Antibody  
Catalog # APR10517**

**Specification**

---

**Anti-TNFRSF10B / TRAILR2 / CD262 Reference Antibody (benufutamab) - Product Information**

Application	FC, E, FTA
Primary Accession	<a href="#">O14763</a>
Reactivity	Cynomolgus, Human, Mouse
Clonality	Monoclonal
Isotype	IgG1
Calculated MW	145 KDa

**Anti-TNFRSF10B / TRAILR2 / CD262 Reference Antibody (benufutamab) - Additional Information**

**Target/Specificity**

TNFRSF10B / TRAILR2 / CD262

**Endotoxin**

< 0.001EU/ µg,determined by LAL method.

**Conjugation**

Unconjugated

**Expression system**

CHO Cell

**Format**

Purified monoclonal antibody supplied in PBS, pH6.0, without preservative.This antibody is purified through a protein A column.

**Anti-TNFRSF10B / TRAILR2 / CD262 Reference Antibody (benufutamab) - Protein Information**

**Name** TNFRSF10B

**Synonyms** DR5, KILLER, TRAILR2, TRICK2, ZTNFR9

**Function**

Receptor for the cytotoxic ligand TNFSF10/TRAIL (PubMed:<a href="http://www.uniprot.org/citations/10549288" target="\_blank">10549288</a>). The adapter molecule FADD recruits caspase-8 to the activated receptor. The resulting death-inducing signaling complex (DISC) performs caspase-8 proteolytic activation which initiates the subsequent cascade of caspases (aspartate-specific cysteine proteases) mediating apoptosis. Promotes the activation of NF-kappa-B. Essential for ER stress-induced apoptosis.

**Cellular Location**

Membrane; Single-pass type I membrane protein.

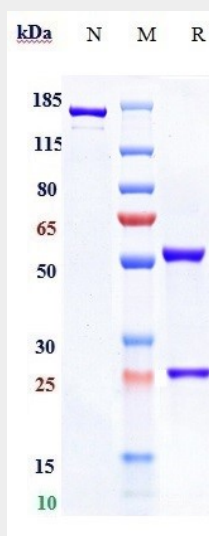
**Tissue Location**

Widely expressed in adult and fetal tissues; very highly expressed in tumor cell lines such as HeLaS3, K-562, HL-60, SW480, A-549 and G-361; highly expressed in heart, peripheral blood lymphocytes, liver, pancreas, spleen, thymus, prostate, ovary, uterus, placenta, testis, esophagus, stomach and throughout the intestinal tract; not detectable in brain

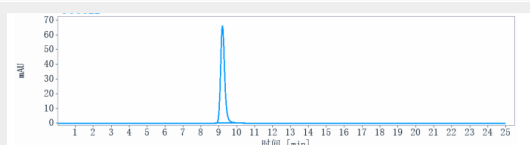
**Anti-TNFRSF10B / TRAILR2 / CD262 Reference Antibody (benufutamab) - Protocols**

Provided below are standard protocols that you may find useful for product applications.

- [Western Blot](#)
- [Blocking Peptides](#)
- [Dot Blot](#)
- [Immunohistochemistry](#)
- [Immunofluorescence](#)
- [Immunoprecipitation](#)
- [Flow Cytometry](#)
- [Cell Culture](#)

**Anti-TNFRSF10B / TRAILR2 / CD262 Reference Antibody (benufutamab) - Images**

Anti-TNFRSF10B / TRAILR2 / CD262 Reference Antibody (benufutamab) on SDS-PAGE under reducing (R) condition. The gel was stained with Coomassie Blue. The purity of the protein is greater than 90%



The purity of Anti-TNFRSF10B / TRAILR2 / CD262 Reference Antibody (benufutamab) is more than 95% ,determined by SEC-HPLC.