

**Anti-CD28L / CD80 Reference Antibody (galiximab)
Recombinant Antibody
Catalog # APR10515****Specification**

Anti-CD28L / CD80 Reference Antibody (galiximab) - Product Information

Application	FC, E, FTA
Primary Accession	P33681
Reactivity	Cynomolgus, Human
Clonality	Monoclonal
Isotype	IgG1
Calculated MW	145.24 KDa

Anti-CD28L / CD80 Reference Antibody (galiximab) - Additional Information**Target/Specificity**
CD28L / CD80**Endotoxin**
< 0.001EU/ µg, determined by LAL method.**Conjugation**
Unconjugated**Expression system**
CHO Cell**Format**
Purified monoclonal antibody supplied in PBS, pH6.0, without preservative. This antibody is purified through a protein A column.**Anti-CD28L / CD80 Reference Antibody (galiximab) - Protein Information****Name** CD80**Synonyms** CD28LG, CD28LG1, LAB7**Function**

Costimulatory molecule that belongs to the immunoglobulin superfamily that plays an important role in T-lymphocyte activation (PubMed: [38467718](http://www.uniprot.org/citations/38467718)). Acts as the primary auxiliary signal augmenting the MHC/TCR signal in naive T-cells together with the CD28 receptor which is constitutively expressed on the cell surface of T-cells (PubMed: [12196291](http://www.uniprot.org/citations/12196291)). In turn, activates different signaling pathways such as NF-kappa-B or MAPK leading to the production of different cytokines (PubMed: [10438913](http://www.uniprot.org/citations/10438913)). In addition, CD28/CD80 costimulatory signal stimulates glucose metabolism and ATP synthesis of T-cells by activating the PI3K/Akt signaling pathway (PubMed: <

href="http://www.uniprot.org/citations/12121659" target="_blank">12121659). Acts also as a regulator of PDL1/PDCD1 interactions to limit excess engagement of PDL1 and its inhibitory role in immune responses (PubMed:36727298). Expressed on B-cells, plays a critical role in regulating interactions between B-cells and T-cells in both early and late germinal center responses, which are crucial for the generation of effective humoral immune responses (By similarity).

Cellular Location

Cell membrane; Single-pass type I membrane protein

Tissue Location

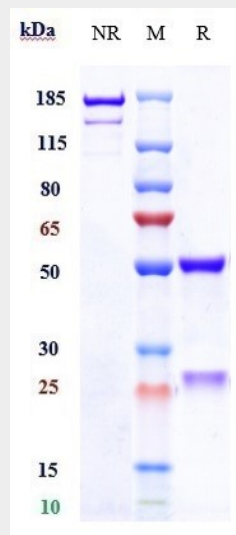
Expressed on activated B-cells, macrophages and dendritic cells

Anti-CD28L / CD80 Reference Antibody (galiximab) - Protocols

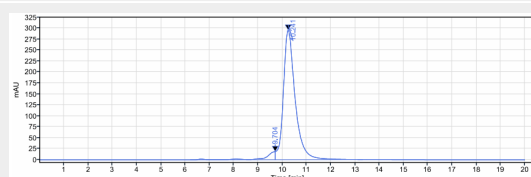
Provided below are standard protocols that you may find useful for product applications.

- [Western Blot](#)
- [Blocking Peptides](#)
- [Dot Blot](#)
- [Immunohistochemistry](#)
- [Immunofluorescence](#)
- [Immunoprecipitation](#)

Anti-CD28L / CD80 Reference Antibody (galiximab) - Images



Anti-CD28L / CD80 Reference Antibody (galiximab) on SDS-PAGE under reducing (R) condition. The gel was stained with Coomassie Blue. The purity of the protein is greater than 95%



The purity of Anti-CD28L / CD80 Reference Antibody (galiximab) is more than 95.08% ,determined by SEC-HPLC.