

**Anti-RHD / CD240d Reference Antibody (roledumab)  
Recombinant Antibody  
Catalog # APR10502**

**Specification**

---

**Anti-RHD / CD240d Reference Antibody (roledumab) - Product Information**

Application	FC, E, FTA
Primary Accession	<a href="#">Q02161</a>
Clonality	Monoclonal
Isotype	IgG1
Calculated MW	147.02 KDa

**Anti-RHD / CD240d Reference Antibody (roledumab) - Additional Information**

**Target/Specificity**  
RHD / CD240d

**Endotoxin**  
< 0.001EU/ µg,determined by LAL method.

**Conjugation**  
Unconjugated

**Expression system**  
CHO Cell

**Format**  
Purified monoclonal antibody supplied in PBS, pH6.0, without preservative.This antibody is purified through a protein A column.

**Anti-RHD / CD240d Reference Antibody (roledumab) - Protein Information**

**Name** RHD

**Function**  
May be part of an oligomeric complex which is likely to have a transport or channel function in the erythrocyte membrane.

**Cellular Location**  
Cell membrane; Multi-pass membrane protein

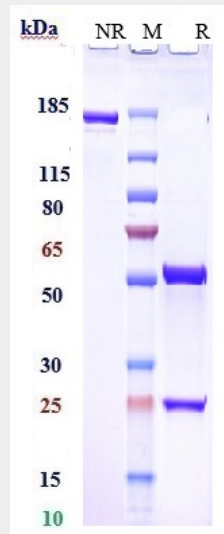
**Tissue Location**  
Restricted to tissues or cell lines expressing erythroid characters

**Anti-RHD / CD240d Reference Antibody (roledumab) - Protocols**

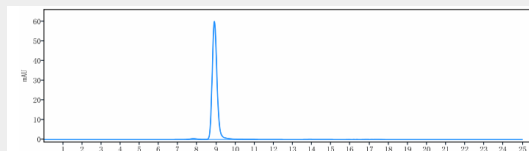
Provided below are standard protocols that you may find useful for product applications.

- [Western Blot](#)
- [Blocking Peptides](#)
- [Dot Blot](#)
- [Immunohistochemistry](#)
- [Immunofluorescence](#)
- [Immunoprecipitation](#)
- [Flow Cytometry](#)
- [Cell Culture](#)

### Anti-RHD / CD240d Reference Antibody (roledumab) - Images



Anti-RHD / CD240d Reference Antibody (roledumab) on SDS-PAGE under reducing (R) condition. The gel was stained with Coomassie Blue. The purity of the protein is greater than 95%



The purity of Anti-RHD / CD240d Reference Antibody (roledumab) is more than 95% ,determined by SEC-HPLC.